

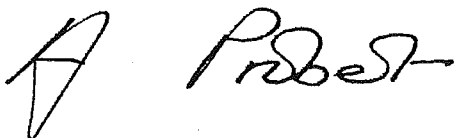
NOTTINGHAM CITY COUNCIL
AREA COMMITTEE EAST (A.C.E) DALES, MAPPERLEY AND ST ANNS

Date: Tuesday 20 November 2012

Time: 7.00pm

Place: Meeting Room LB 31/32 - 3rd Floor at Loxley House, Station Street

Councillors are requested to attend the above meeting on the date and at the time and place stated to transact the following business.



Acting Director of Resources

Constitutional Services Officer: Catherine Ziane-Pryor Direct dial - 0115 8764298

A G E N D A

- | | | |
|----------|--|--------------------------|
| 1 | APOLOGIES FOR ABSENCE | |
| 2 | DECLARATIONS OF INTERESTS | |
| 3 | MINUTES
Last meeting held on 4 September 2012 (for confirmation) | Attached |
| 4 | WARD PERFORMANCE REPORT - QUARTER 2
Report of Director of Neighbourhood Services | Attached |
| | (a) Dales Ward Report | Attached |
| | (b) Mapperley Ward Report | Attached |
| | (c) St Ann's Ward Report | Attached |
| 5 | AREA CAPITAL FUND 2011/13 PROGRAMME
Report of Director of Neighbourhood Services | Attached |
| 6 | DELEGATED AUTHORITY
Report of Director of Neighbourhood Services | Attached |
| 7 | COMMUNITY REPRESENTATIVES
Report of Director of Neighbourhood Services | Available at the meeting |

8 DATE OF NEXT MEETING

To note that the next meeting will be held on 12 February 2013 at 7pm in Loxley House.

IF YOU ARE UNSURE WHETHER OR NOT YOU SHOULD DECLARE AN INTEREST IN A PARTICULAR MATTER, PLEASE CONTACT THE CONSTITUTIONAL SERVICES OFFICER SHOWN ON THIS AGENDA, IF POSSIBLE BEFORE THE DAY OF THE MEETING, WHO WILL PROVIDE ADVICE IN THE FIRST INSTANCE.

CITIZENS ATTENDING MEETINGS ARE ASKED TO ARRIVE AT LEAST FIFTEEN MINUTES BEFORE THE START OF THE MEETING TO BE ISSUED WITH VISITOR BADGES

THERE WILL BE A PRE-MEETING FOR APPOINTED COMMUNITY REPRESENTATIVES AT 6.30 PM IN THE MEETING ROOM

Agenda, reports and minutes for all public meetings can be viewed online at:-
<http://open.nottinghamcity.gov.uk/comm/default.asp>

NOTTINGHAM CITY COUNCIL**AREA COMMITTEE EAST (A.C.E)****MINUTES**

of meeting held on **4 SEPTEMBER 2012** at

Loxley House from 7.02 pm to 8.25 pm

- ✓ Councillor S Johnson (Chair)
- ✓ Councillor R Healy (Joint Vice-Chair)
- ✓ Councillor J Collins (for minutes 9 to 16 inclusive)
- ✓ Councillor E Dewinton
- ✓ Councillor G Khan
- ✓ Councillor Liversidge
- ✓ Councillor D Mellen
- ✓ Councillor T Molife (for minutes 14 to 17 inclusive)
- ✓ Councillor K Williams

✓ indicates present at meeting

Community representatives and citizens in attendance

- Ms J Summers - (Joint Vice-Chair) St Stephen's Church
- Miss C James - Gains Tenants and Residents Group
- Mr P Wright - Sneinton Tenants Outreach Programme
- Mr C Lydall - Resident
- Miss C Lawson - Resident
- Mrs J Brennan - Friends of Coppice Park/Alexandra Park Residents Association
- Mr A Campbell - African Caribbean and Asian Forum
- Mr M Cox - Mapperley Park Residents Association
- Mr D Towers - Mapperley Park Residents Association
- Mrs A Stone - City Heights Mapperley
- Mr P Henson - Mapperley Road Neighbourhood Watch
- Mr R Zyiko - STAA Ltd
- Miss J Gordon - St Ann's North Tenants and Residents Association
- Mr G Feltham - Sneinton Tenants and Residents Association
- Ms P Daly - Forces for Their Future Veterans Services and Residents
- Ms K Martin - Resident
- Ms K Thompson - Resident
- Mr F Slade - Nottingham CVS

City Council colleagues, partners and others in attendance

- Miss C Underwood - The Renewal Trust

Ms F Cusick	- Neighbourhood Development Officer)	
Ms M Graley	- Neighbourhood Development Officer)	
Ms B Hanna	Neighbourhood Development Officer)	
Mrs D Holmes	- South Locality Manager)	Communities
Mr N Martin	- Clean Team)	
Mr M Sunderland	- City Services)	
Mr R Kalsi	- Constitutional Services Officer	-	Resources
Ms I Andrews	- Market Development Programme)	
	Manager)	
Mr K Beaumont	- Head of Family Community Team South)	
Ms C Brudenell	- Director of Quality & Commissioning)	Children & Families
)	
Mr S Oakley	- Head of Quality & Efficiency)	
Ms K Thomas	- Community Service Manager)	

Please note: except where otherwise indicated, all items discussed at the meeting were the subject of a report which had been circulated beforehand.

ACTION

9 APOLOGIES FOR ABSENCE

Apologies for absence were received from Rev. Richard Clark and Inspector Mark Stanley.

10 DECLARATIONS OF INTEREST

No declarations of interests were made.

11 MINUTES

RESOLVED that the minutes of the last meeting held on 15 May 2012, copies of which had been circulated, be confirmed and signed by the Chair.

12 STREAMLINING INVESTMENT TO THE VOLUNTARY COMMUNITY SECTOR

(Director of Quality and Commissioning)

Ms Candida Brudenell, who circulated the above report at the meeting, introduced the report and presented the Committee with the following information:

- following the agreement of the Executive Board Commissioning Sub Committee (EBCSC) on 23rd May and 27th July 2012, future proposals were outlined which sought to create a more streamlined and transparent system of investment in the Voluntary Community Sector. It was

ACTION

anticipated that the new approach would be implemented for April 2013;

- proposals sought to improve the transparency and accessibility of funding allocation and shift to an outcome-based system that would provide a collated picture of how money is spent in local communities;
- the proposed model would work on three levels, councillors' individual budgets, robust arrangements at Area Committee level which included scope for small grants and through a commissioned services let on a City-wide basis;
- further consultation with both the Area Committee and VCS were planned to discuss the types of priority outcomes that the money could and could not support. Options to create a financial process to support would be discussed with the VCS prior to its implementation.

The following concerns were raised by Councillors and Community Representatives:

- concerns were raised regarding the challenging timescales for implementation;
- it was thought that simple guidance on the process should be circulated in advance of its implementation to ensure that all Community Representatives are aware of the process;
- It was pointed out that it would be difficult to allocate funding to all groups across the three wards however cooperation amongst groups would be encouraged for the good of the community.

RESOLVED

- (1) that the new model for streamlining funding to the VCS that includes Area Committees as a geographical basis for the dissemination of funding be noted;
- (2) that the current spend detailed in the Area Funding Schedule for Area 6 (appendix 1) be noted.

14 WARD PERFORMANCE REPORT

The report and presentation was presented by the South Area Locality Manager, Dorothy Holmes which outlined proposals to collate ward information in a new way.

Several issues were raised by Councillors and Community Representatives:

- in response to queries, it was confirmed that the updated report would

ACTION

include members from a variety of faculties to update to the Committee;

- it was confirmed that Community Representatives could offer feedback on the proposals to either Dorothy Holmes or the Neighbourhood Development Officers.

RESOLVED

D Holmes

- (1) that the initial Area Committee Ward Performance Report outlined in the appendix, be noted;
- (2) that the Area Committee note that the full Ward Performance report is currently under development with key partners;
- (3) that the report contains a generic example of data to be included in future reports.

15 AREA CAPITAL FUND

(Director for Neighbourhoods and Communities)

The report and addendum was presented by Neighbourhood Development Officer, Fi Cusack.

RESOLVED

D Holmes

- (1) that the monies available to Dales, Mapperley and St Ann's Wards as outlined in Appendix 1, be noted;
- (2) that the Area Capital programme of schemes for Dales, Mapperley and St Ann's, as set out in Appendix 1, be approved.

16 DELEGATED AUTHORITY REPORT

(Director for Neighbourhoods and Communities)

The report and addendum was presented by Neighbourhood Development Officer, Michelle Graley.

RESOLVED that the Area Committee note the actions agreed by the Director of Neighbourhood Services in respect of projects and schemes within Area 6, as detailed in Appendix A.

17 FAMILY COMMUNITY TEAMS RE-STRUCTURING

K Beaumont

Ken Beaumont, Head of the Family Community Team South, presented an update to the Committee on the restructure of the Family Community Team.

The following comments were made in relation to the presentation:

ACTION

- the objective of the restructure was to develop and support the capacity and confidence of universal services to take responsibility for identifying and responding to needs earlier and more effectively;
- the restructure would ensure a seamless continuum of family support that is more clearly targeted towards vulnerable children, families and communities;
- although not part of the restructure, it was confirmed that the specialist services (Disabled Children's Teams, Youth Offending Team and Educational Psychology) would remain visible and engaged in the local delivery and partnership arrangements;
- the transition in the structure had witnessed the appointment of specialists and the reduction of managers. It was envisaged that future reports would be brought back to the Area Committee to report on community engagement and development.

RESOLVED that the presentation be noted.

ALL AREA COMMITTEES November / December 2012

4

Title of paper:		WARD PERFORMANCE REPORTS - Q2	
Director(s)/ Corporate Director(s):	Andy Vaughan Director of Neighbourhood Services	Wards affected: All	
Contact Officer(s) and contact details:	Heidi May North Locality Manager Heidi.may@nottinghamcity.gov.uk Dorothy Holmes South Locality Manager Dorothy.holmes@nottinghamcity.gov.uk John Marsh Central Locality Manager John.marsh@nottinghamcity.gov.uk		
Other officers who have provided input:	Dave Halstead Head of City Services Dave.Halstead@nottinghamcity.gov.uk Christine Oliver Senior implementation Manager Crime and Drugs Partnership Christine.oliver@nottinghamcity.gov.uk		
Relevant Council Plan theme(s):			
World Class Nottingham		X	
Work in Nottingham		X	
Safer Nottingham		X	
Neighbourhood Nottingham		X	
Family Nottingham		X	
Healthy Nottingham		X	
Leading Nottingham			
Summary of issues (including benefits to customers/service users):			
<p>The ward performance reports provide updates on key issues and themes which link back to local priorities and the strategic themes in the Nottingham Plan 2020. The reports provide summary updates on the following key themes:</p> <ul style="list-style-type: none"> • Ward priorities • Community engagement • Finance • Safer theme - Crime and anti social behaviour (ASB) • Neighbourhood theme - Environmental issues and Housing • Working theme - Unemployment rates • Health Theme – local health priorities 			
Recommendation(s):			
1	Area Committee note and comment on the Ward Performance Reports for quarter 2 2012/13.		
1	<u>BACKGROUND</u>		
1.1	Neighbourhood Working has been important for a number of years in Nottingham as a means of engaging better with citizens and to drive forward service improvement.		
1.2	The Nottingham Plan has a goal that 'public service delivery will be better integrated and appropriately devolved, ensuring more accessible and responsive services for all		

and giving residents more control over what happens in their neighbourhoods'; the Ward Performance reports help to support this.

1.3 The Ward Performance Reports captures work at a local level to support the Nottingham Plan; it is a short summary of key updates on priorities and issues in the ward. More detailed implementation plans sit behind the report such as the Ward Action Plan, Neighbourhood Action Team's Action Log, Crime Drug Partnership (CDP) plans and other partner's implementation plans.

1.4 The Ward Performance Reports are co-ordinated by Neighbourhood Development Officers every quarter, with the data analysis undertaken by the CDP.

2 REASONS FOR RECOMMENDATIONS (INCLUDING OUTCOMES OF CONSULTATION)

2.1 Ward performance reports provide a descriptive and statistical picture of what is happening at a ward level and invite community representatives to comment, debate, and challenge and identify how they can add value to improve their neighbourhoods.

2.2 Ward performance reports also monitor progress in the wards and act as a catalyst for debate about the key performance issues impacting upon the ward on a quarterly basis.

3 OTHER OPTIONS CONSIDERED IN MAKING RECOMMENDATIONS

3.1 None

4 FINANCIAL IMPLICATIONS (INCLUDING VALUE FOR MONEY)

4.1 None

5 RISK MANAGEMENT ISSUES (INCLUDING LEGAL IMPLICATIONS, CRIME AND DISORDER ACT IMPLICATIONS AND EQUALITY AND DIVERSITY IMPLICATIONS)

5.1 None

6 EQUALITY IMPACT ASSESSMENT

Has the equality impact been assessed?

Not needed (report does not contain proposals or financial decisions)

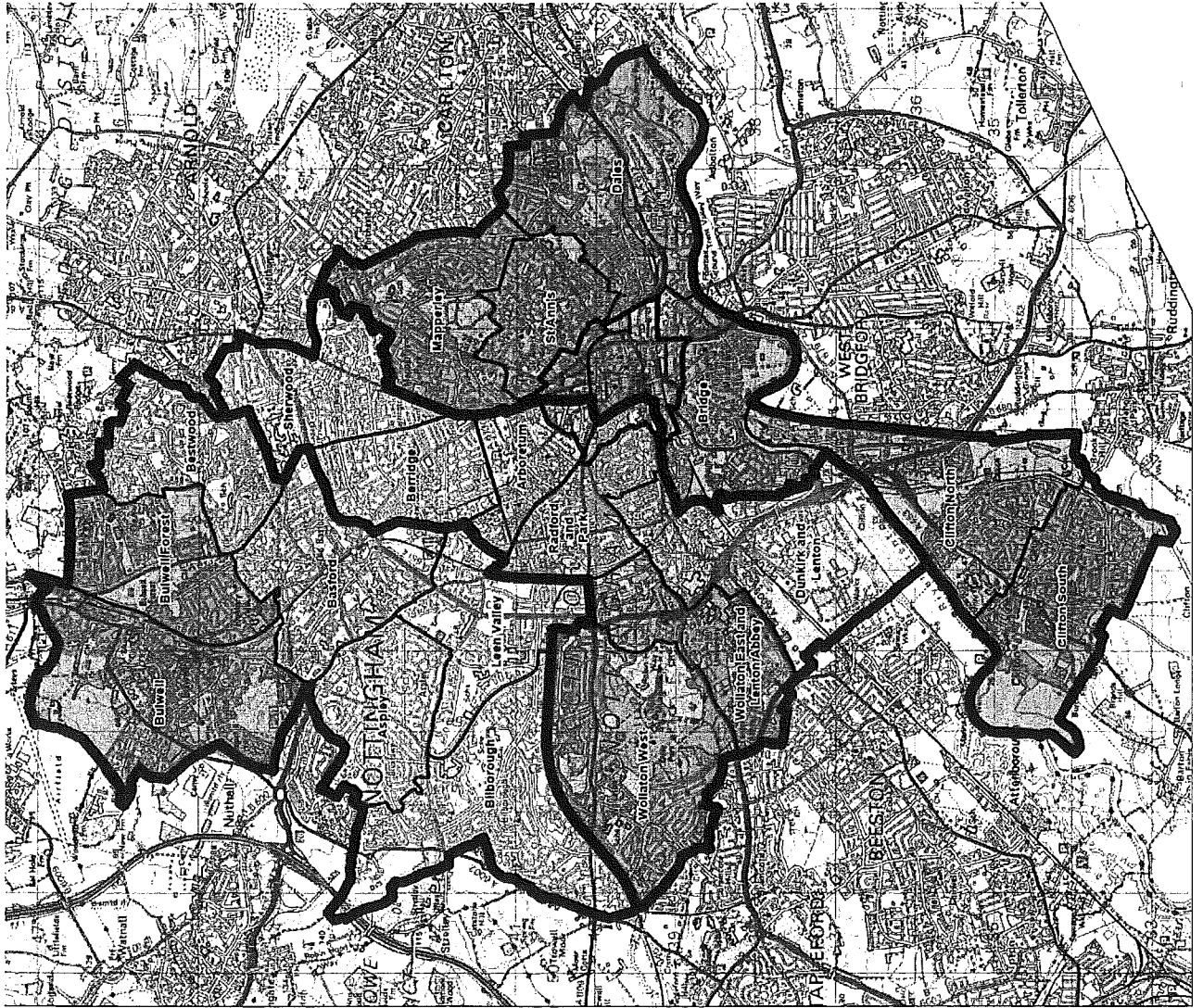


7 LIST OF BACKGROUND PAPERS OTHER THAN PUBLISHED WORKS OR THOSE DISCLOSING CONFIDENTIAL OR EXEMPT INFORMATION

7.1 Neighbourhood Working Framework 2012 CLT report

8 PUBLISHED DOCUMENTS REFERRED TO IN COMPILING THIS REPORT

8.1 None



Dales

Area Committee
Executive Summary

September 2012

49

Introduction

- The Dales Ward has a diverse community 75% white and 10% Pakistani. In previous census with figures due for the 2011 Census due which will show an increase in East European African and Roma immigrants.
- The index of deprivation 2010 highlights five out of nine areas of the ward in the worst 10% for Crime and disorder. However by February 2011 this had changed and levels of crime across the Ward had fallen from 80 crimes per month to single figures. Lifting the ward out of the worst 10%.
- The 2010 figures for health deprivation and disability were in the worst 10% in 4 of 9 areas.
- Income deprivation affecting children and older people were in the worst 10% in 4 of 9 areas.
- The high levels of private rented accommodation have attracted people from over fifty five countries mainly to the Sneinton area.
- There are seven Community Centres with lots of community sports dance and social groups meeting in them.

Ward Priorities

THEME	PRIORITY	KEY ACTIONS
SAFER	<ul style="list-style-type: none"> To reduce antisocial behaviour targeting most prolific offenders. Tackle, drug taking and dealing particularly on parks and open spaces Reduce repeat reporting of domestic violence. 	<ul style="list-style-type: none"> Coordinate work of Neighbourhood Services Community Protection Police at monthly NAT which is planning a Week of Action in October. Recruiting to Neighbourhood Alert. Domestic Violence Forum providing training and information packs for officers. NDVF running sessions on DV awareness at local schools.
NEIGHBOURHOODS	<ul style="list-style-type: none"> To tackle levels of fly tipping and bins on streets- reduction of dog fouling, Improving local parks. Ensure the views of local people assist in setting priorities Support work of Community Associations and groups 	<ul style="list-style-type: none"> Monitor progress of actions at monthly NAT meeting. Week of action being planned dog fouling at hot spots Neighbourhood Services and CPO's targeting streets Consultation re equipment at Colwick Woods and Parkdale Parks WREN bids were successful. 10 Local Issues Meeting and Councillor Ward Walks
FAMILIES	<ul style="list-style-type: none"> Assistance to families in Stress Support for integration of East European African and Roma families 	<ul style="list-style-type: none"> Family Community Teams/Epic and partners have an activity Timetable for Summer and other holidays. City/ Renewal Trust Partnership Worker coordinating work with Roma families.
HEALTH	<ul style="list-style-type: none"> Improve well being on the community. Tackle high levels of coronary heart disease and diabetes. Provide health promotion advice. 	<ul style="list-style-type: none"> Health Promotion Team support health groups and activities for Heart Health, Cancer and Lifestyle risks alcohol, smoking healthy eating , physical activity, mental health).
WORKING	<ul style="list-style-type: none"> More Jobs, Training and volunteering opportunities 	<ul style="list-style-type: none"> The Renewal Trust Childcare Voucher Scheme: Carlton Road Job Shop -Enterprise Coaching Service provides advice to local start up businesses community businesses. Support migrant workers

Community Engagement

Ward Walks

Area/Estate	Date/Time	Meeting Point
Parkdale/Bakerdale Rd	Wednesday 12 th September 5pm-6.30pm	Parkdale Rd corner
Skipton Circus	Wednesday 7 th November 9.30-11am	Skipton Circus/Sneinton Dale

Community Meetings

Group	Date	Venue
Heritage day Hermitage Caves-Sneinton Alchemy	Sunday 9 th September 2-4pm	Sneinton Hermitage
Local Issues meeting South Sneinton	Monday 17 th September 7-9pm	Muslim Community Organisation Centre
Sneinton Tenants and Residents Association	Tuesday 25 th September 7-8.30pm	St Christopher's Church
Local Issues Meeting	Tuesday 16 th October 6.30-8pm	St Cyprians Church
Councillors Cafe	Wednesday 17 th October 8.30-10am	Sure Start 144 Sneinton Dale
Local Issues Meeting	Thursday 18 th October 6.30-8.30pm	Greenway Centre
Local Issues Meeting	Monday 12 th November 6.30-8pm	United Reform Church

Community Engagement

Events Delivered

Event	Lead Partners	Date/Time	Venue
Week of Action – A series of events/actions around Environmental issues	NOMS Police Community Protection Recycling Officer Family and Community team	W/C 15th October-19th October	Various street locations

Future Events and Activities Planned

Event	Lead Partners	Date/Time	Venue
NCC Budget 2013-14 Consultation	Councillors Locality Management	5th December 6-7.30pm	St Christopher's Church hall
Christmas tree and Lights Switch on	Councillors Locality Management	Friday 14th December 12noon and 4pm	Sneinton Police Station forecourt
Young peoples activities	Locality Management Renewal Trust	September	Community Centre

Finance

Ward Councillor Budgets

Total Amount allocated this period £5,570

Budget Remaining Unallocated £9,593 (inc of 2012-13 allocation)

Area Capital Fund

Total Amount allocated this period £ None

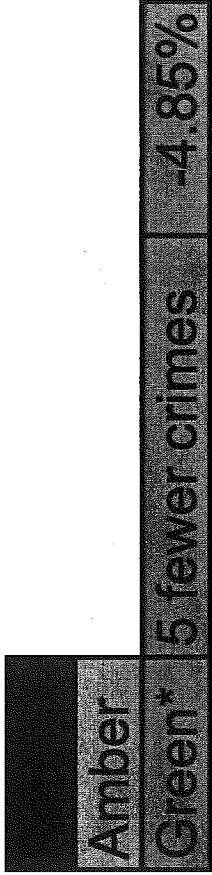
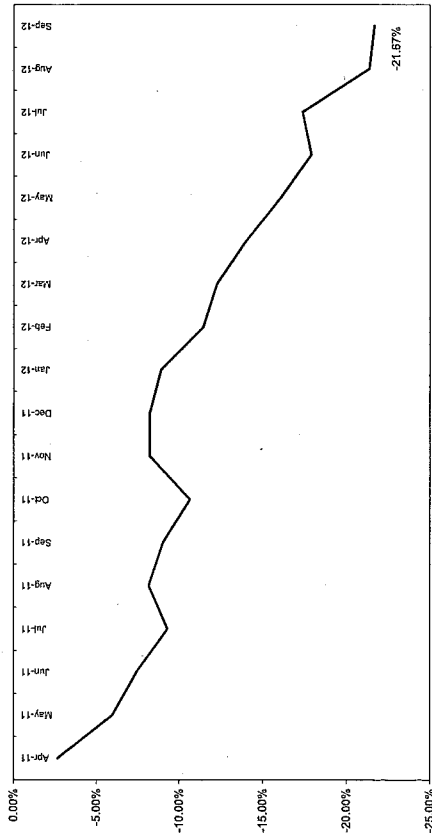
Budget Remaining Unallocated £29,186 (inc of 2012-13 allocation)

Others – Section 106, NCH Environmentals, Other Funding

None this period

Crime

All Crime in Dales -
% Change over 2010/11 Baseline (Rolling 12 Month)



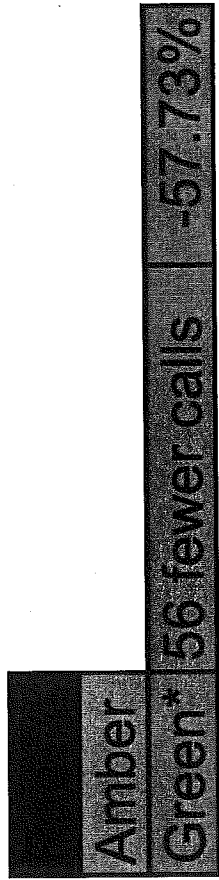
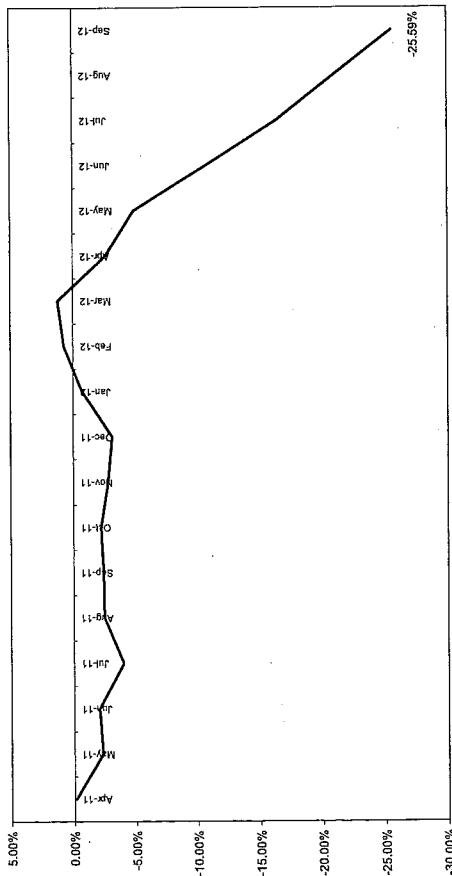
*Refers to September 2012 compared to September 2011

- All Crime in Dales is down compared to September 2011. In addition, Year to Date figures indicate that All Crime is down by 20% compared to the previous year.
- The above Baseline graph indicates that All Crime in Dales has decreased by 22%. The graph also emphasises the general decline in All Crime, indicating that figures for this month are in line with those observed in previous months.
- The Rate of All Crime per 1000 of the population for Dales falls below the City average.

Ward Contact: Mark Stanley

All ASB

All ASB in Dales -
% Change over 2010/11 Baseline (Rolling 12 Month)



*Refers to September 2012 compared to September 2011

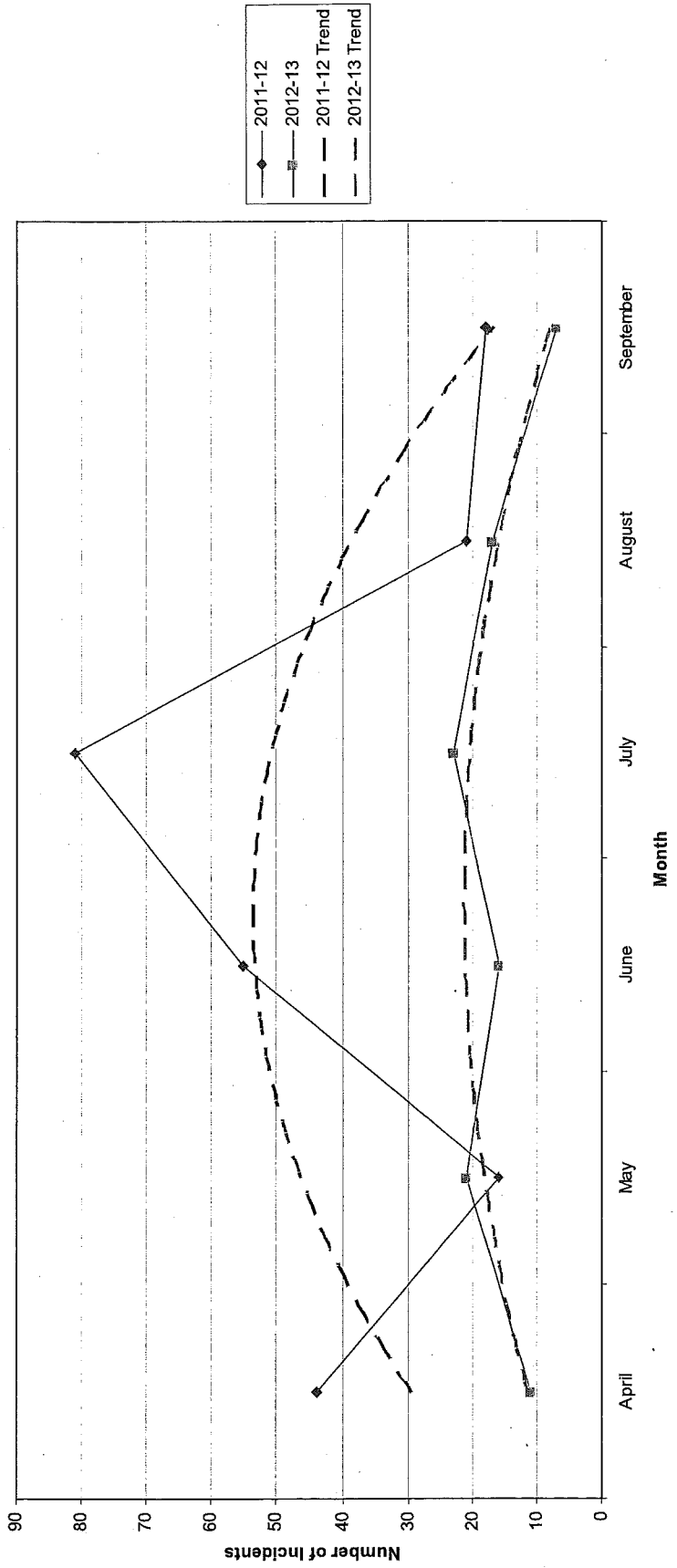
- In September 2012 Dales had less than half the ASB calls it had in September 2011.
- By Year to Date, Dales has experienced another reduction of nearly half (-45%). The Year to Date performance of the Division as a whole was at -31% at the end of September 2012.
- Over a 2010/11 Baseline Dales is showing a reduction of -26%. The graph also highlights the steady decline in ASB calls over the past 6 months.
- Of all ASB calls received for Dales in September 2012 the majority (66%) were categorised as 'Nuisance'. This is consistent with the Division as a whole. Of the remaining calls 27% were classed as 'Environmental' and 7% were classed as 'Personal'.

Graffiti Reports

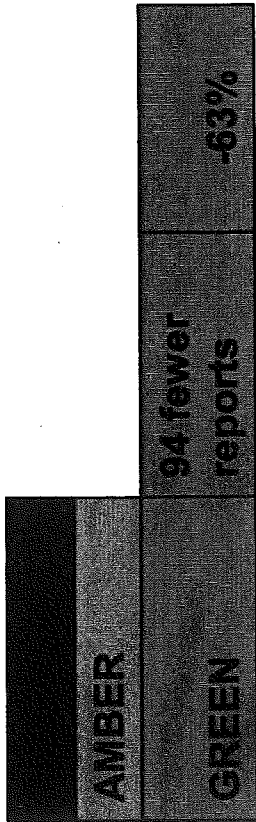
AMBER	
GREEN	11 fewer reports -61%

- All data refers to a comparison with the previous year's month
- It is proposed that performance over time graphs be used for each indicator
- Historic data for comparison is not available for dog fouling

Incidents of Graffiti



Fly Tipping

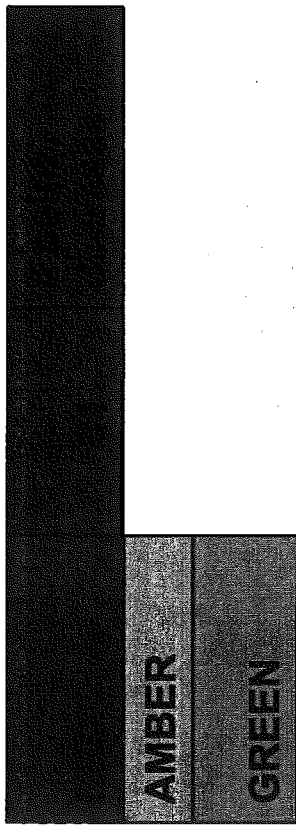


- All data refers to a comparison with the previous year's month
- It is proposed that performance over time graphs be used for each indicator
- Historic data for comparison is not available for dog fouling

Incidents of Fly Tipping

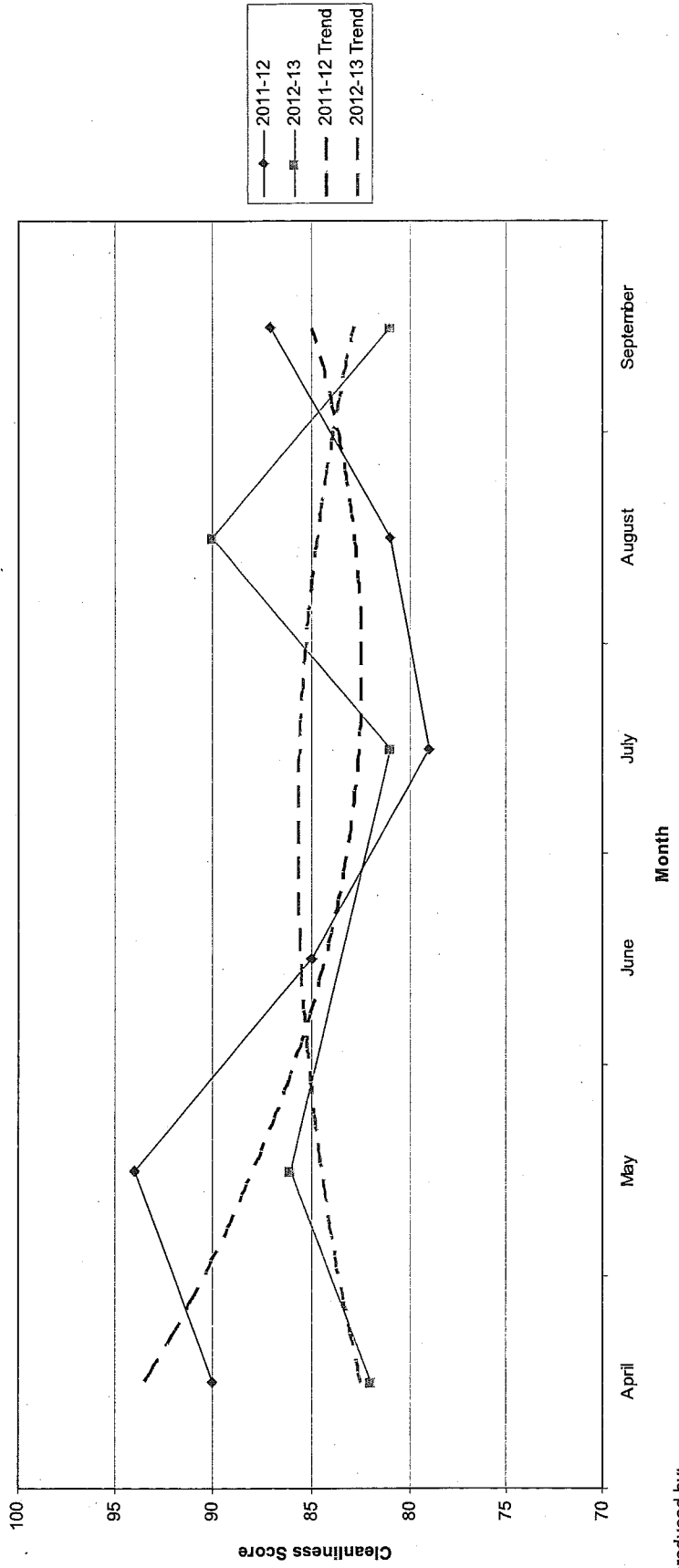


Cleanliness Index



- All data refers to a comparison with the previous year's month
- It is proposed that performance over time graphs be used for each indicator
- Historic data for comparison is not available for dog fouling

Cleanliness Index



Unemployment Rate

Ward	Aug-12			Change in last month		Change in last year	
	Number	Rate	City Rank	Number	%	Number	%
Arboretum	830	7	9	12	1.5	86	11.6
Aspley	1,197	10.6	1	15	1.3	57	5
Basford	730	6.6	11	21	3	25	3.5
Berridge	1,090	7.5	6	17	1.6	115	11.8
Bestwood	989	8.7	4	-26	-2.6	-19	-1.9
Bilborough	762	7.3	7	-36	-4.5	6	0.8
Bridge	756	7.2	8	6	0.8	15	2
Bulwell	1,045	9.6	2	-4	-0.4	32	3.2
Bulwell Forest	444	4.9	15	-12	-2.6	-5	-1.1
Clifton North	381	4.3	16	-14	-3.5	27	7.6
Clifton South	506	5.8	12	12	2.4	-11	-2.1
Dales	883	7.6	5	-10	-1.1	8	0.9
Dunkirk and Lenton	262	2.4	19	-5	-1.9	-27	-9.3
Leen Valley	351	5	14	13	3.8	26	8
Mapperley	750	6.7	10	31	4.3	8	1.1
Radford and Park	776	4.1	17	-19	-2.4	36	4.9
Sherwood	552	5.1	13	-19	-3.3	-71	-11.4
St Ann's	1,242	9	3	13	1.1	29	2.4
Wollaton East and Lenton Abbey	144	1.5	20	9	6.7	4	2.9
Wollaton West	262	2.8	18	29	12.4	25	10.5

Source: ONS claimant count August 2012 (from Nomis)

This is an edited version of a report produced by: Geoff Oxendale, Information and Research Officer, Nottingham City Council

Housing



Dales Ward

Empty properties - Dales Ward

Indicator	Current Target	2010/11		2011/12		2012/13		Trend
		Value	Status	Value	Status	Value	Status	
Average void re-let time for Dales Ward	26	26.12		17.5		35.11		↔
Lettable voids Dales Ward		7		12		6		↑
Empty properties awaiting decommission in Dales Ward		8		2		1		↑

Estate star ratings (from Tenant Service Inspectors)

Indicator	2010/11		2011/12		2012/13		Trend
	Value	Status	Value	Status	Value	Status	
Estate star rating - Sneinton	2 Star	●	3 Star	●	3 Star	●	↑
Estate star rating - Colwick	2 Star	●	3 Star	●	3 Star	●	↑
Estate star rating - Cardale	2 Star	●	3 Star	●	3 Star	●	↑
Estate star rating - Bakersfield	3 Star	●	3 Star	●	3 Star	●	▬

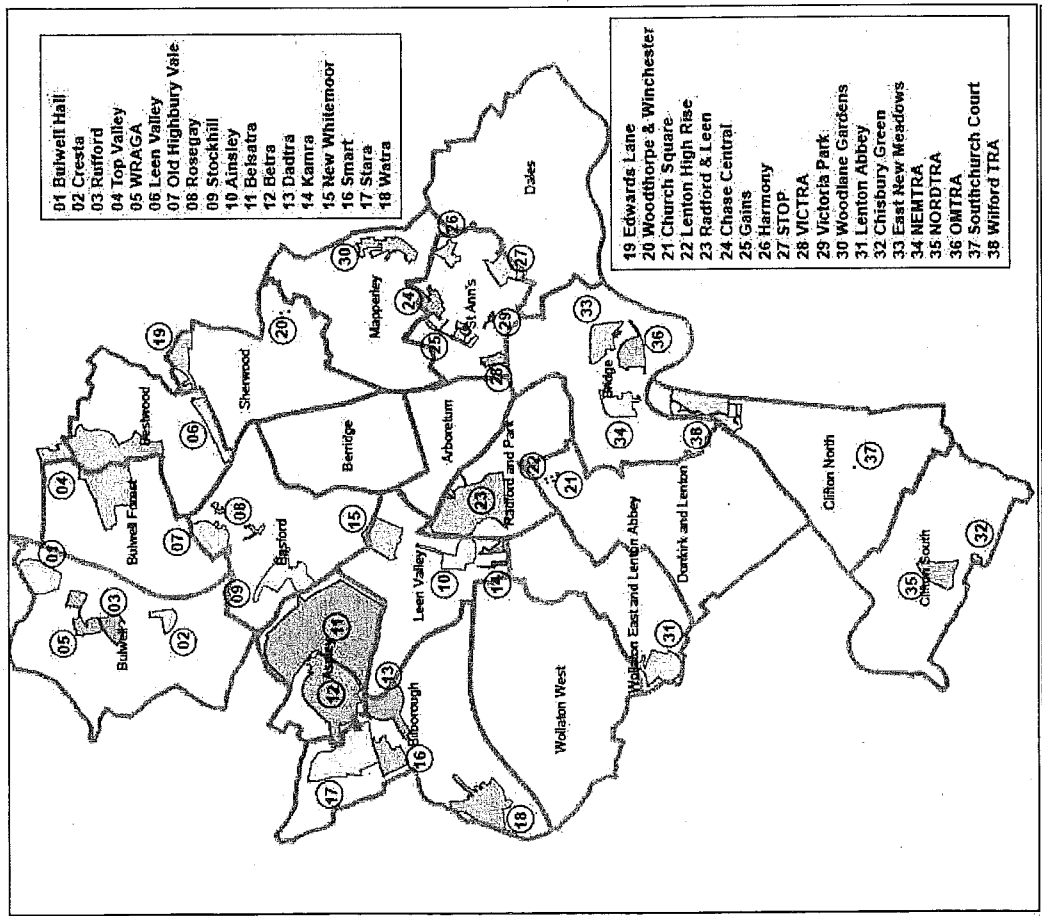
Rent Collection - St Anns

Indicator	Current Target	2010/11		2011/12		2012/13		Trend
		Value	Status	Value	Status	Value	Status	
Rent charged that has been collected - St Anns office area	100%	100.3%		101.4%		99.9%		↔

Data prepared by Nottingham City Homes Performance Team
 For more information please contact Tricia Quinn, Performance Review Manager on 0115 9157365 or Marcus Parton, Performance Review Officer 0115 915715

Housing

Map of Tennant and Resident Associations by Ward



Community Protection

In Dales in the last month there were the following court outcomes:

- Antisocial Behaviour Order for Harassment;
- Two Outright Possession Orders (Evictions): one was for Antisocial behaviour and the other was for Noise; and
- Two Cautions.

Data has been received from Community Protection and where postcodes have been listed these have been geo-coded and mapped to determine the Ward. All addresses relate to the address of the Perpetrator.

FPNs are not currently available at Ward level.

Methodology

Crime Data and ASB calls have been extracted from the Police systems and mapped to ascertain which Ward they occurred in.

Due to the dates of the meetings, data for all Wards was extracted at the same time at the start of the month - and as such is not officially 'validated' data.

Where possible the most recent data is used, although for some areas this may be a month further in arrears.

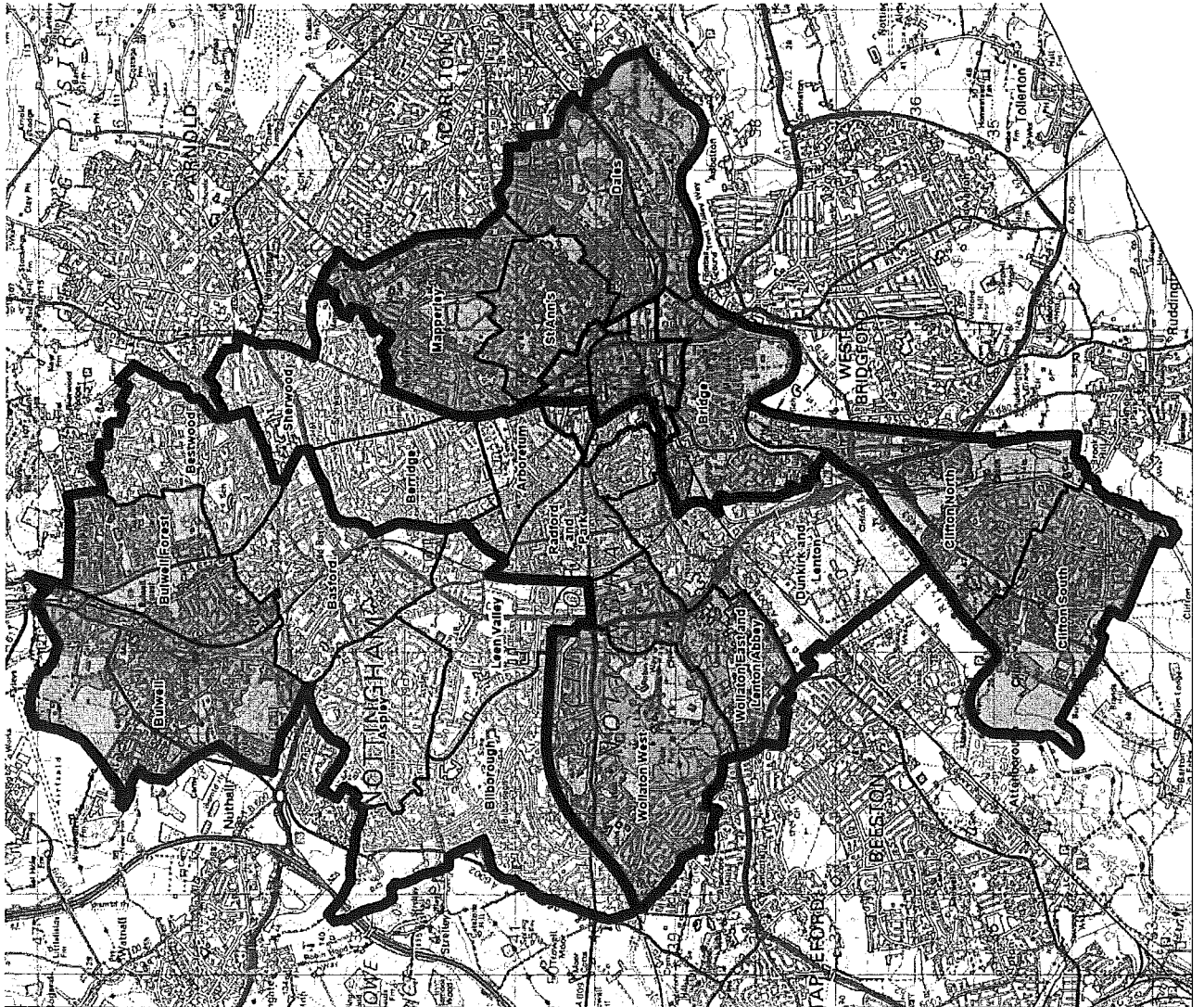
Discussions continue with other agencies regarding what further data can be included.

Mapperley

Area Committee

Executive Summary

September 2012



Introduction

- **The 2011 census results have not yet been released, so in some cases the data comes from the 2001 census. Where it is possible, more recent data or estimates have been used.**
- Mapperley Ward is diverse in its make up with 82% white, 3.4% other white, 3.2% black Caribbean and 2.4% Indian
- Parts of Mapperley Ward, namely Brewster's Road, Pearmain Road Estate, Wells Road and Ransom Road, Cauntton Avenue, and surrounding areas rank in the worst 10% nationally in multiple deprivation for health and disability, employment and skills, income and for crime and disorder
- 18% of the working age population claim working tax credit and 36% of pensioners claim pension credit as income top ups
- There were 1,333 enrolments in the Mapperley Ward schools in 2010
- There are two NCC Community Centres in the Ward, Wells Road and Mapperley. There are four centres run by churches: Methodist Church community Centre, St Judes community centre, St Augustine's community centre and St Andrews church Hall and Elohim Development Academy

Ward priorities – Progress update

Theme	Priority	Key Actions
SAFER	<p>Prevent and reduce substance misuse</p> <p>Raise awareness in preventing and responding to domestic violence</p>	<p>EPIC, CRS, FCT youth provision</p> <p>Vanguard Plus active in the area</p> <p>Enforcement by Police and housing providers</p> <p>DV awareness campaigns e.g. 'Man Enough'</p> <p>Themed networking events and local forums</p> <p>DV awareness funded by councillors in local schools "GREAT"</p> <p>NDVF programme</p>
NEIGHBOUR-HOODS	<p>Safer Parks meeting the needs of local people</p> <p>Distraction activities for youths involved in negative gang culture</p> <p>Improved housing opportunities</p>	<p>Local volunteers days held in Sycamore and Coppice Parks. Park Ranger patrols</p> <p>Regular distraction activities for young people held weekly</p> <p>Monthly Councillor Ward Walks</p> <p>CPS & housing providers work together to identify premises where bins are left on street and enforce untidy gardens</p> <p>Local volunteer days held on monthly basis in Sycamore and coppice Park's. CPO/PCSO patrols.</p> <p>Support voluntary sector universal youth club at St Jude's community centre.</p> <p>Environmental target hardening of public spaces, cut throughs etc through environmental capital fund e.g. gating Botany/Ransom Road alleyway. Partnership work with police to secure private access against misuse e.g. Melville court.</p>

Ward priorities – Progress update

<p>FAMILIES</p>	<p>Accessible up to date information for residents</p> <p>Support sustainable youth provision</p> <p>Bus services to responds to community need</p>	<p>Activities timetable produced by FIS</p> <p>Notice boards/email contacts kept up to date</p> <p>FCT, EPIC, CRS providing weekly youth provision</p> <p>Dialogue with NCT. Survey to be carried out</p> <p>Regular quarterly Ward forums on the Wells Road and Wood borough Road areas.</p> <p>Themed Networking forum on young people</p>
<p>HEALTH</p>	<p>Increased access to NHS dental services</p> <p>Promote DOBH to encourage healthier lifestyles</p>	<p>Weekly NHS mobile dentist surgery at Eiohim</p> <p>DOBH Team at all local events and Change Makers volunteer recruitment</p> <p>Themed networking event on Health and well being</p>
<p>WORKING</p>	<p>Local services to support residents in finding work, training or learning</p> <p>Support people aged 16-25yrs into employment or training</p> <p>Job Shop Localy</p>	<p>Renewal Trust deliver job shop, enterprise coaching service, business centre, childcare voucher scheme</p> <p>Raise awareness of existing provision and opportunities</p> <p>South Notts College taster day Old Morley School , Wells Road</p> <p>Themed forum on Employment and training</p>

Community Engagement

Events Delivered

Event	Lead Partners	Date/Time	Venue
Ward Forum	Police, NCH,	12 June 2012, 7-9	St Andrews Church
Ward Forum	Police, NCT	10 July 2012, 7-9	Elohim Development Academy
Game On	EPIC	03 August 2012, 1-6	Coppice Park
Firework display	Friends of coppice park	4 th November	Coppice Park
Park Volunteer session Sycamore Park 27 th	Local councillors and volunteers	27 th October	Sycamore Park

Future Events and Activities Planned

Event	Lead Partners	Date/Time	Venue
Ward Forum (North)	Councillors, Locality Management	Tbc	tbc
Ward Forum (South)	Councillors, Locality Management	7pm-9pm 29 th November	Elohim Development Academy The Wells Road
Day of Action	Locality Management, Police, CPS, NCH, Metropolitan, TRA	Tbc	Tbc
South Notts Taster Day for young people	South Notts College	9 th November	Elohim Development Academy /old Morley School
Park Volunteer Days coppice park	Councillors Parks and Volunteers	24 th November 2012 23 rd February 2013	Coppice park
Park Volunteer day Sycamore park	Councillors Parks and Volunteers	26 th January 2013 30 th march 2013	Sycamore Park

Community Engagement

Ward Walks

Area/Estate	Date/Time	Meeting Point
Tbc	Tbc	Tbc
See local publicity for details of walks and how to get in touch with councillors and officers		

Community Meetings

Group	Date	Venue
STANRA	16 th August, 6.30pm	Elohim Development Academy
Ward Forum	2 nd October	St Andrews Church
Stanra Christmas Party	8 th December 2pm-5pm	Elohim Development Academy
Festive activities at St Anns Allotments and Eco works	See Local Publicity	Allotments /Eco works

Finance

Ward Councillor Budget

- Total amount allocated this period £0.00 (requests being processed)
- Budget remaining unallocated £17,970 (inc of 2012-2013 allocation)

Area Capital Fund

- Total amount allocated this period £6,275
- Budget remaining unallocated £31,990 (inc of 2012-2013 allocation)

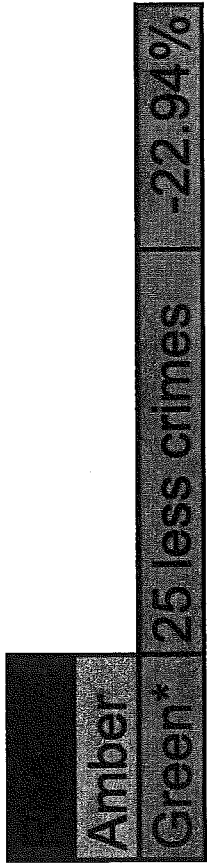
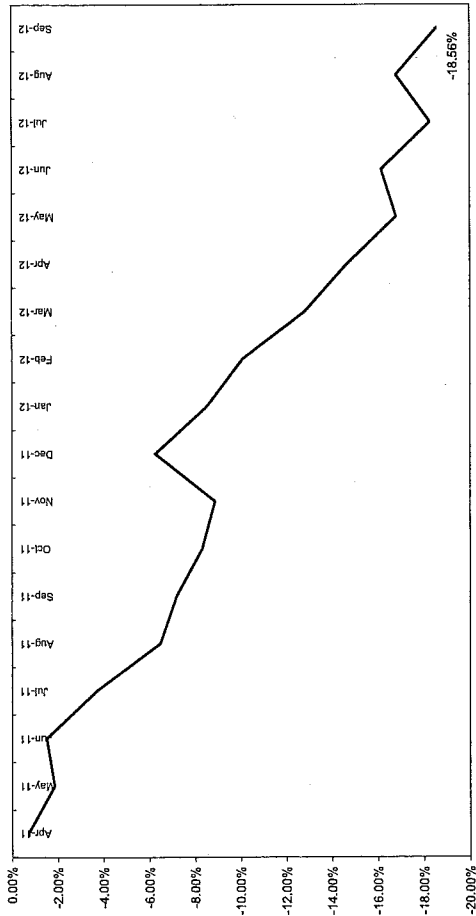
Other – Section 106, NCH Environmentals,

Other Funding

- None this period

Crime

All Crime in Mapperley -
% Change over 2010/11 Baseline (Rolling 12 Month)



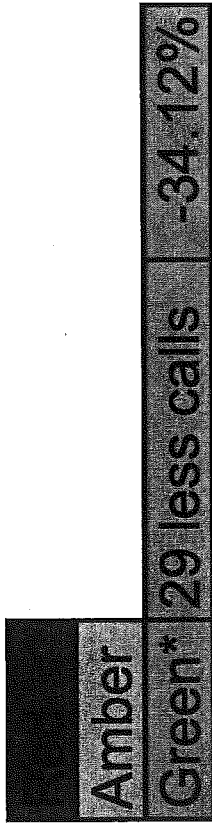
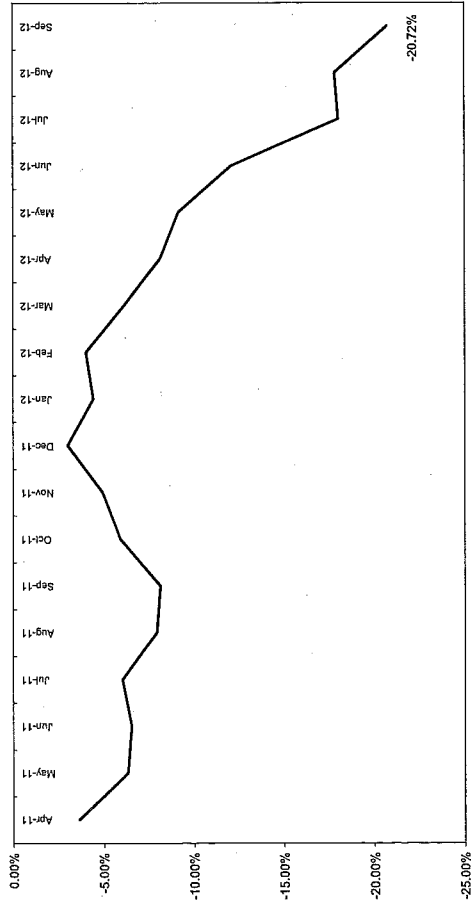
*Refers to September 2012 compared to September 2011

- All Crime in Mapperley is showing a decrease compared to September 2011.
- All Crime is down Year to Date compared to the previous year.
- The above graph indicates that All Crime in Mapperley has decreased by -19% against a 2010/11 Baseline. The steady decline in All Crime has also been highlighted.
- Increases have been observed by month in 'Autocrime' (6 crimes), 'Burglary' (4 crimes) and 'Personal Robbery' (1 crime). For 'Autocrime' and 'Personal Robbery' these increases are also observed Year to Date.

Ward Contact: Mark Stanley

All ASB

All ASB in Mapperley -
% Change over 2010/11 Baseline (Rolling 12 Month)



*Refers to September 2012 compared to September 2011

- For September 2012 compared to September 2011 Mapperley is showing a sizeable reduction (-34%) in ASB calls.
- By Year to Date, Mapperley has also experienced a significant reduction in all ASB calls (-29%).
- The graph above shows that Mapperley is showing a reduction of -21% over a 2010/11 Baseline.
- The majority of ASB calls (77%) fell into the 'Nuisance' category. Of the remaining calls 12% were categorized as 'Personal' and 11% were 'Environmental'.

Graffiti Reports

AMBER	13 fewer reports	-100%
GREEN		

- All data refers to a comparison with the previous year's month
- It is proposed that performance over time graphs be used for each indicator
- Historic data for comparison is not available for dog fouling

Incidents of Graffiti

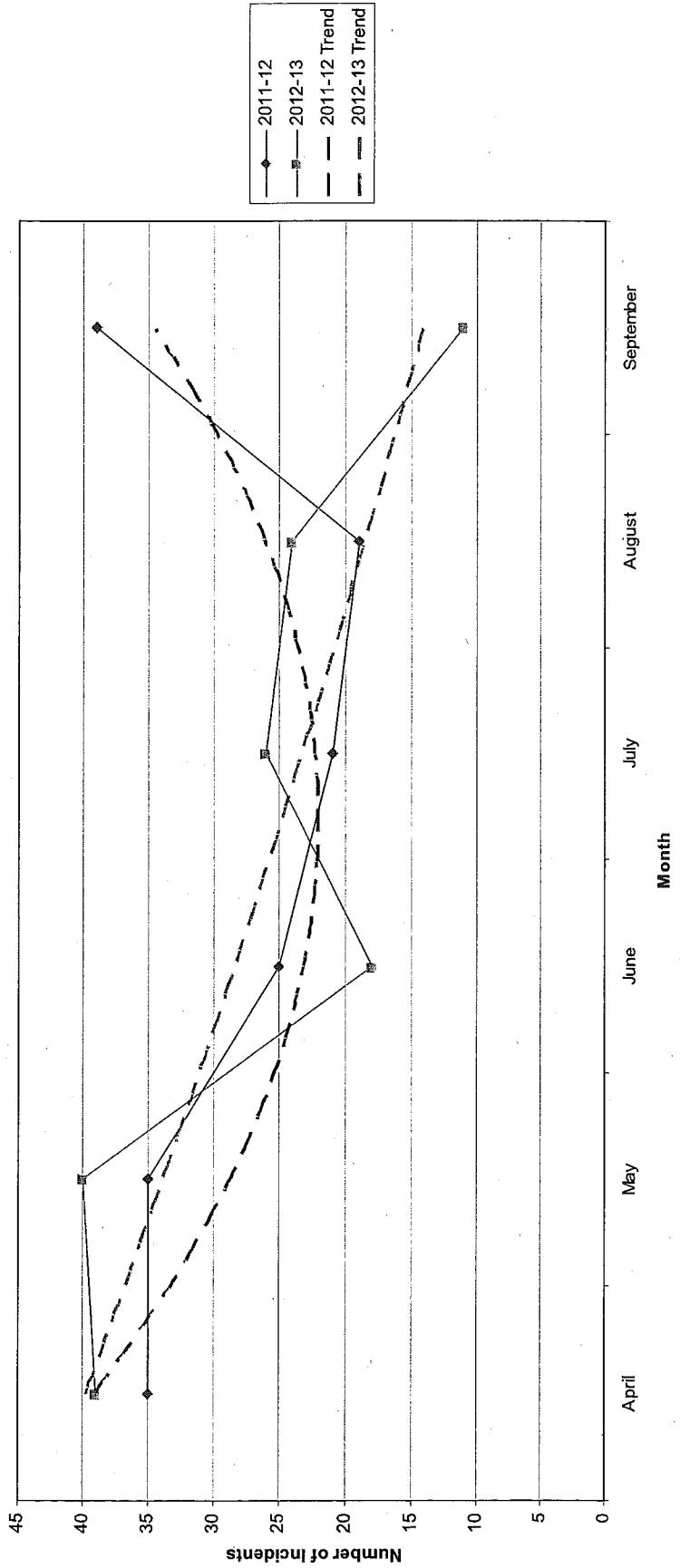


Fly Tipping

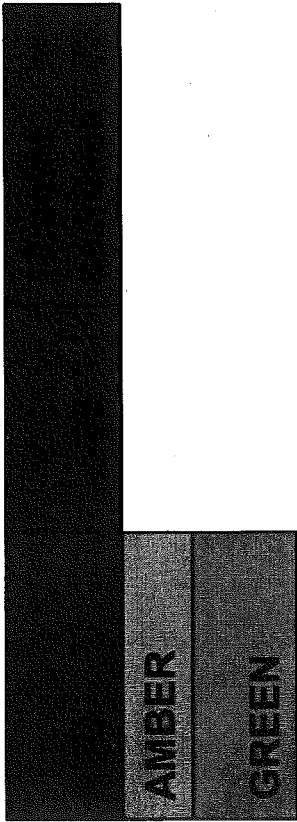
AMBER	
GREEN	28 fewer reports -72%

- All data refers to a comparison with the previous year's month
- It is proposed that performance over time graphs be used for each indicator
- Historic data for comparison is not available for dog fouling

Incidents of Fly Tipping

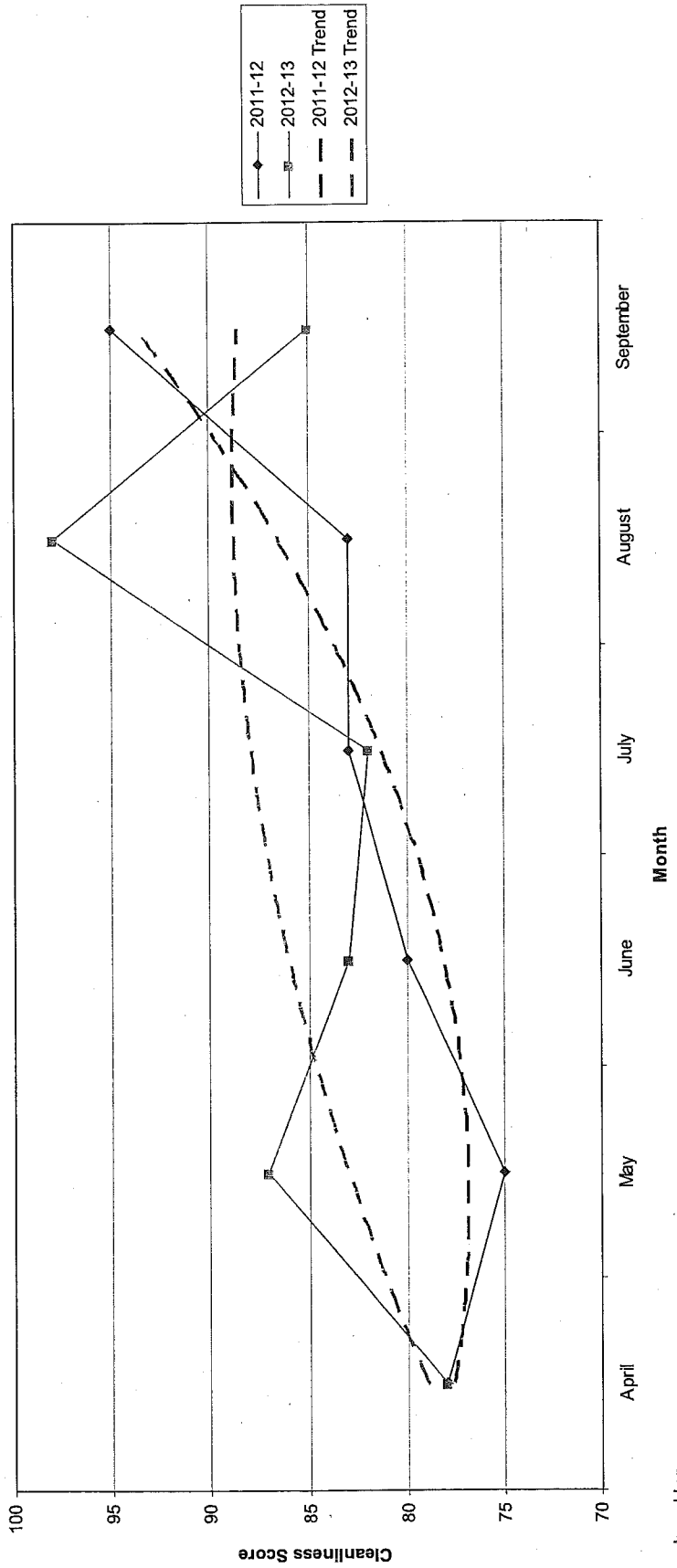


Cleanliness Index



- All data refers to a comparison with the previous year's month
- It is proposed that performance over time graphs be used for each indicator
- Historic data for comparison is not available for dog fouling

Cleanliness Index



Unemployment Rate

Ward	Aug-12			Change in last month		Change in last year	
	Number	Rate	City Rank	Number	%	Number	%
Arboretum	830	7	9	12	1.5	86	11.6
Aspley	1,197	10.6	1	15	1.3	57	5
Basford	730	6.6	11	21	3	25	3.5
Berridge	1,090	7.5	6	17	1.6	115	11.8
Bestwood	989	8.7	4	-26	-2.6	-19	-1.9
Bilborough	762	7.3	7	-36	-4.5	6	0.8
Bridge	756	7.2	8	6	0.8	15	2
Bulwell	1,045	9.6	2	-4	-0.4	32	3.2
Bulwell Forest	444	4.9	15	-12	-2.6	-5	-1.1
Clifton North	381	4.3	16	-14	-3.5	27	7.6
Clifton South	506	5.8	12	12	2.4	-11	-2.1
Dales	883	7.6	5	-10	-1.1	8	0.9
Dunkirk and Lenton	262	2.4	19	-5	-1.9	-27	-9.3
Leen Valley	351	5	14	13	3.8	26	8
Mapperley	750	6.7	10	31	4.3	8	1.1
Radford and Park	776	4.1	17	-19	-2.4	36	4.9
Sherwood	552	5.1	13	-19	-3.3	-71	-11.4
St Ann's	1,242	9	3	13	1.1	29	2.4
Wollaton East and Lenton Abbey	144	1.5	20	9	6.7	4	2.9
Wollaton West	262	2.8	18	29	12.4	25	10.5

Source: ONS claimant count August 2012 (from Nomis)

This is an edited version of a report produced by: Geoff Oxendale, Information and Research Officer, Nottingham City Council

Housing



Mapperley Ward

Empty properties - Mapperley Ward

Indicator	Current Target	2010/11		2011/12		2012/13		Trend
		Value	Status	Value	Status	Value	Status	
Average void re-let time for Mapperley Ward	26	26.53		24		22		↑
Lettable voids Mapperley Ward		2		3		6		↔
Empty properties awaiting decommission in Mapperley Ward		125		2		2		-

Estate star ratings (from Tenant Service Inspectors)

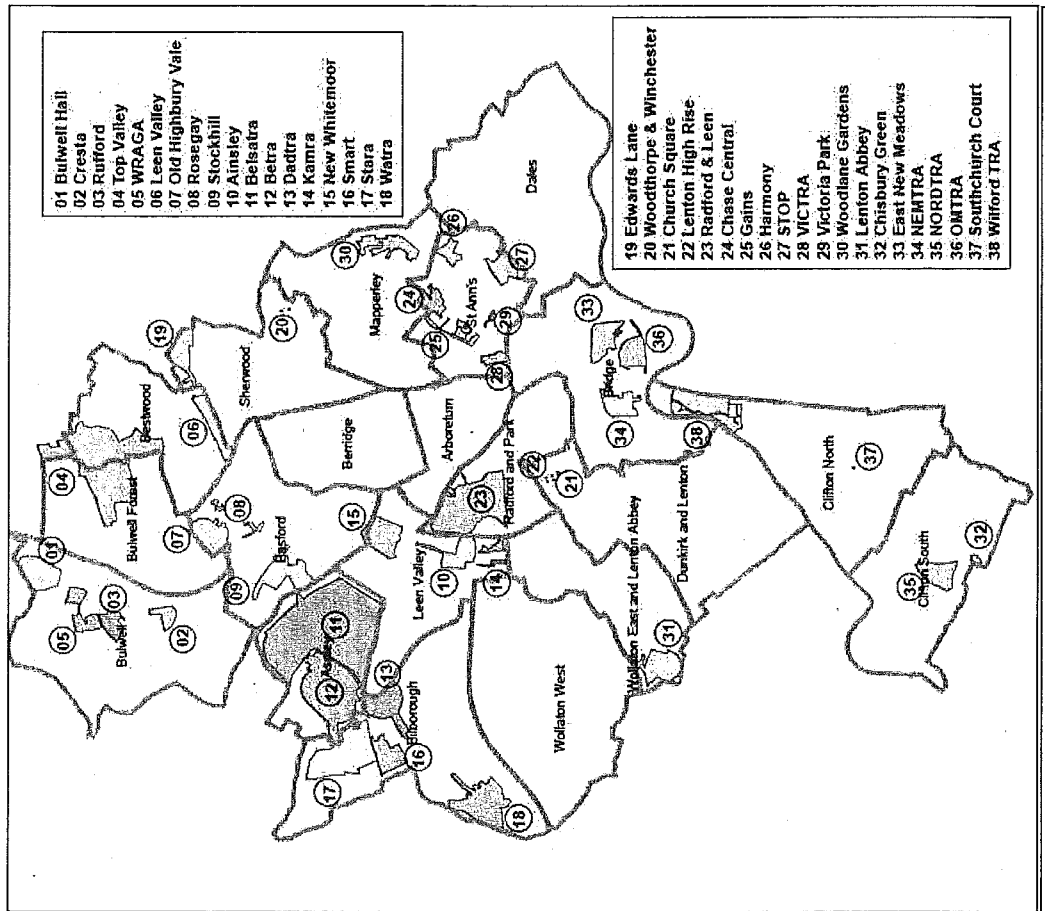
Indicator	2010/11		2011/12		2012/13		Trend
	Value	Status	Value	Status	Value	Status	
Estate star rating - Mapperley	3 Star		3 Star		3 Star		▬

Rent Collection - Southglade

Indicator	Current Target	2010/11		2011/12		2012/13		Trend
		Value	Status	Value	Status	Value	Status	
Rent charged that has been collected - Southglade office area	100%	100.7%		101.9%		100.4%		↘

Housing

Map of Tenant and Resident Associations by Ward



Community Protection

In Mapperley in the last month there was the following court outcome:

- 1 Statutory Notice – for Environment

Data has been received from Community Protection and where postcodes have been listed these have been geo-coded and mapped to determine the Ward. All addresses relate to the address of the Perpetrator.

FPNs are not currently available at Ward level.

Methodology

Crime Data and ASB calls have been extracted from the Police systems and mapped to ascertain which Ward they occurred in.

Due to the dates of the meetings, data for all Wards was extracted at the same time at the start of the month - and as such is not officially 'validated' data.

Where possible the most recent data is used, although for some areas this may be a month further in arrears.

Discussions continue with other agencies regarding what further data can be included.

ALL AREA COMMITTEES November / December 2012

Title of paper:	WARD PERFORMANCE REPORTS - Q2	
Director(s)/ Corporate Director(s):	Andy Vaughan Director of Neighbourhood Services	Wards affected: All
Contact Officer(s) and contact details:	Heidi May North Locality Manager Heidi.may@nottinghamcity.gov.uk Dorothy Holmes South Locality Manager Dorothy.holmes@nottinghamcity.gov.uk John Marsh Central Locality Manager John.marsh@nottinghamcity.gov.uk	
Other officers who have provided input:	Dave Halstead Head of City Services Dave.Halstead@nottinghamcity.gov.uk Christine Oliver Senior implementation Manager Crime and Drugs Partnership Christine.oliver@nottinghamcity.gov.uk	
Relevant Council Plan theme(s):		
World Class Nottingham		X
Work in Nottingham		X
Safer Nottingham		X
Neighbourhood Nottingham		X
Family Nottingham		X
Healthy Nottingham		X
Leading Nottingham		
Summary of issues (including benefits to customers/service users):		
<p>The ward performance reports provide updates on key issues and themes which link back to local priorities and the strategic themes in the Nottingham Plan 2020. The reports provide summary updates on the following key themes:</p> <ul style="list-style-type: none"> • Ward priorities • Community engagement • Finance • Safer theme - Crime and anti social behaviour (ASB) • Neighbourhood theme - Environmental issues and Housing • Working theme - Unemployment rates • Health Theme – local health priorities 		
Recommendation(s):		
1	Area Committee note and comment on the Ward Performance Reports for quarter 2 2012/13.	
1	<u>BACKGROUND</u>	
1.1	Neighbourhood Working has been important for a number of years in Nottingham as a means of engaging better with citizens and to drive forward service improvement.	
1.2	The Nottingham Plan has a goal that 'public service delivery will be better integrated and appropriately devolved, ensuring more accessible and responsive services for all	

and giving residents more control over what happens in their neighbourhoods'; the Ward Performance reports help to support this.

1.3 The Ward Performance Reports captures work at a local level to support the Nottingham Plan; it is a short summary of key updates on priorities and issues in the ward. More detailed implementation plans sit behind the report such as the Ward Action Plan, Neighbourhood Action Team's Action Log, Crime Drug Partnership (CDP) plans and other partner's implementation plans.

1.4 The Ward Performance Reports are co-ordinated by Neighbourhood Development Officers every quarter, with the data analysis undertaken by the CDP.

2 REASONS FOR RECOMMENDATIONS (INCLUDING OUTCOMES OF CONSULTATION)

2.1 Ward performance reports provide a descriptive and statistical picture of what is happening at a ward level and invite community representatives to comment, debate, and challenge and identify how they can add value to improve their neighbourhoods.

2.2 Ward performance reports also monitor progress in the wards and act as a catalyst for debate about the key performance issues impacting upon the ward on a quarterly basis.

3 OTHER OPTIONS CONSIDERED IN MAKING RECOMMENDATIONS

3.1 None

4 FINANCIAL IMPLICATIONS (INCLUDING VALUE FOR MONEY)

4.1 None

5 RISK MANAGEMENT ISSUES (INCLUDING LEGAL IMPLICATIONS, CRIME AND DISORDER ACT IMPLICATIONS AND EQUALITY AND DIVERSITY IMPLICATIONS)

5.1 None

6 EQUALITY IMPACT ASSESSMENT

Has the equality impact been assessed?

Not needed (report does not contain proposals or financial decisions)



7 LIST OF BACKGROUND PAPERS OTHER THAN PUBLISHED WORKS OR THOSE DISCLOSING CONFIDENTIAL OR EXEMPT INFORMATION

7.1 Neighbourhood Working Framework 2012 CLT report

8 PUBLISHED DOCUMENTS REFERRED TO IN COMPILING THIS REPORT

8.1 None



St Ann's

Area Committee Executive Summary

September 2012

FC

Introduction

St Anns is an inner city housing area located approximately 1.7 miles from the Nottingham Town Centre. St Anns Ward lies within Area Committee 6 to the East of Nottingham City. At the time of the 2001 census, which is still some of the most thorough information available, there were a total of 14,840 people living in a 7940 households (2005 estimate) in the St Anns boundaries, according to the Office for National Statistics.

There are a larger number of people between the ages of 16 -29 and 30- 44 than across the Nottingham City as a whole, whilst the number of children and young people under the age of 15 is slightly lower than the City figures. This age profile suggests that the area is likely to contain a higher number of working age people than the City average. As a community, St Ann's estate experiences extreme social need and local deprivation.

As part of this, Health deprivation is currently a particular major problem for the residents which include the lowest life expectancy in particular for females than the average across the City. Some examples of poor health include; high incidences of coronary heart disease and stroke, of certain cancers in the older population, respiratory disease and poor diet amongst other.

Ward priorities – Progress update

THEME	PRIORITY	KEY ACTIONS
SAFER	<ul style="list-style-type: none"> To reduce antisocial behaviour – including drinking, drug taking and dealing particularly on parks and open spaces More Neighbourhood Watch Schemes 	<ul style="list-style-type: none"> Policing Priorities set with local Community representatives – 7th November 2012 Magistrates – question and answer session – 7th November 2012 Neighbourhood Alert High patrols are being undertaken for alcohol confiscation
NEIGHBOURHOODS	<p>To improve the environment - reduction of dog fouling, Improving local parks.</p> <p>Improve appearance of estate</p> <p>Resolve derelict empty properties and buildings.</p>	<ul style="list-style-type: none"> NCH, NDO and CPO's are working together to identify bins and untidy gardens. Mini Week of Action scheduled on Cromer Road, Chandos Street and Randsom Rd – Date TBC Councillors, NCH and NDO are currently in the process of reviewing the Area Capital Fund and identifying priorities with Community Groups. Regular Councillor Ward Walks
FAMILIES	More volunteers and activities for young people at local venues	<ul style="list-style-type: none"> King Edwards Park Event and Marmion Park Event The Renewal Trust continue to recruit and support local volunteers to work in the community
HEALTH	Raising awareness of health and activities, with a key focus on Domestic Violence	<p>Health Specialist has now joined NAT meetings</p> <p>Area 6 Chair and Vice Chair are leading on a number of Themed Networking Forums; Children & Young People; Domestic Violence; Health & Well being and Employment & Training. Dates will need to be confirmed.</p>
WORKING	<p>More Jobs, Training and volunteering opportunities</p> <p>More business investment</p>	<p>Area 6 Chair and Vice Chair are leading on a number of Themed Networking Forums; Employment & Training. Dates will need to be confirmed.</p>

Community Engagement

Events Delivered

Event	Lead Partners	Date/Time	Venue
Nottingham City Homes – Tenants Participation Event	Nottingham City Homes	Wed 5 th September 2012	Council House
Peer Review- Community Module	NDO, Home Office & CDP	Fri 7 th September 2012	•Russell Youth Club •The Chase Neighbourhood Centre
Marmion Park Event	Local Volunteers & Renewal Trust	Sat 14 th September 2012 1.00pm till 4.30pm	Marmion Park
Blue Bell Hill Community Centre – Halloween Event	Blue Bell Hill Management Committee, Local Councillors and NDO	Fri 26 th October 2012 – 6.30pm till 9.00pm	Blue Bell Hill Community Centre's Management Committee
Christmas Lights Switch On Event – St Anns	NDO & Local Schools and Volunteers	Monday 3 rd December 2012	St Anns Police Station and The Chase
Christmas Lights Switch On Event – Sneinton Market Square	NDO – Wendy Honeyman –Smith Sneinton Community Traders & Andrew Miller Leisure Centre Manager & Partner	Friday 7 th December 2012	Sneinton Market Square

Community Engagement

Ward Walks

Area/Estate	Date/Time	Meeting Point
Northampton Street/ Bullace Road	Tuesday 25 th September 2012	Corner of Southampton Street and Blue Bell Hill
Pym Street / Marmion Estate and Leighton Street	Tuesday 23 rd October 2012	Corner of Gordon Road and Beecham Avenue

Community Meetings

Group	Date	Venue
Home Office Peer Review	7 th September 2012	The Chase Neighbourhood Centre
Local Issues Meeting – Community	7 th November 2012- 6.30pm till 8.30pm	St Anns Valley Centre
Budget Consultation	20 th November 2012- All day	St Anns Valley Centre

Finance

Ward Councillor Budgets

Total Amount allocated this period £500.00

Budget Remaining Unallocated £31,906 (inc. of 2012-2013 allocation)

Area Capital Fund

Total Amount allocated this period £14,032.40 (Delegated Authority to follow)

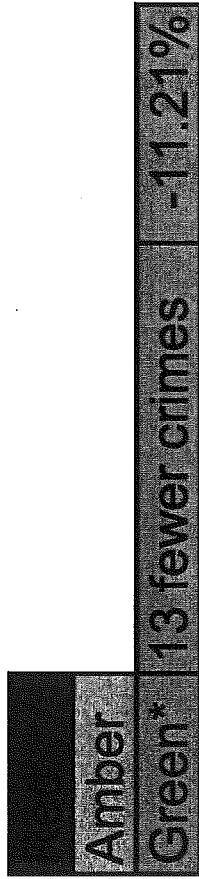
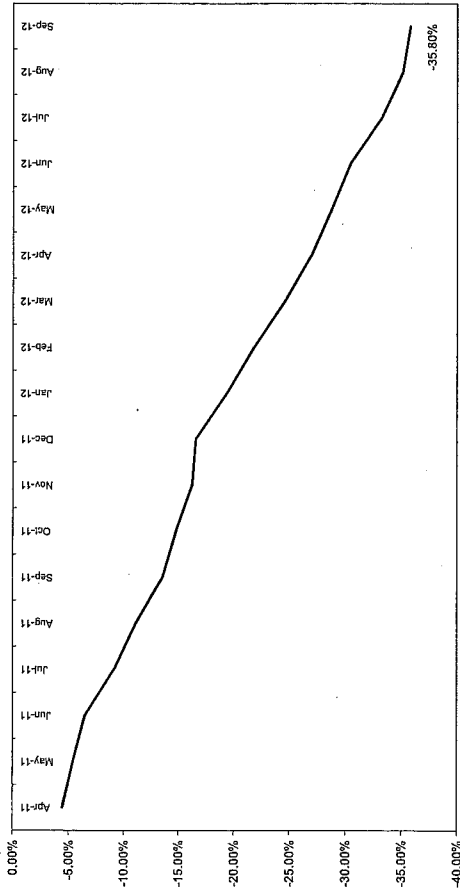
Budget Remaining Unallocated £145,906 (inc. of 2012-2013 allocation)

Others – Section 106, NCH Environmental, Other Funding

NCH Environmental Scheme 2012-13 £164,474

Crime

All Crime in St Anns -
% Change over 2010/11 Baseline (Rolling 12 Month)



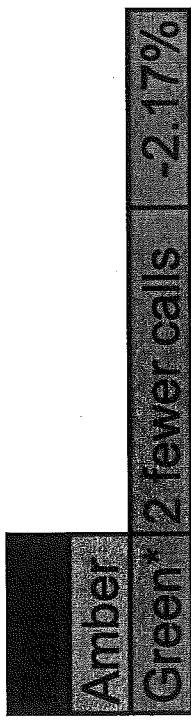
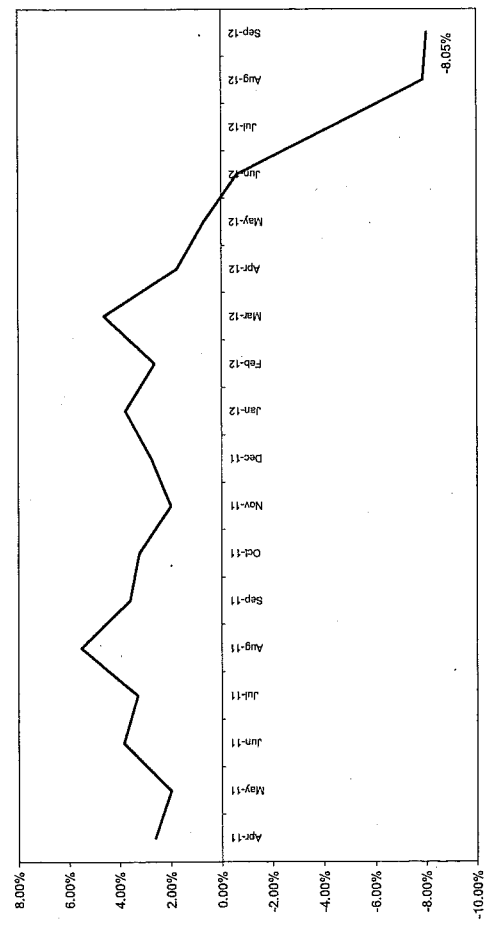
*Refers to September 2012 compared to September 2011

- All Crime in St Anns is showing a reduction compared to September 2011. In addition, Year to Date figures indicate that All Crime is down by 27% compared to the previous year.
- The above Baseline graph indicates that All Crime in St Anns has decreased by 36% against 2010/11. The graph also emphasises the general decline in All Crime, indicating that figures for this month are in line with those observed previously.
- The Rate of All Crime per 1000 of the population for St Anns falls below the City average. However St Anns does have the second highest rate of 'Violence' in the City, and the third highest Rate of 'Criminal Damage' and 'Theft from Person'.

Ward Contact: Mark Stanley

All ASB

All ASB in St Anns -
% Change over 2010/11 Baseline (Rolling 12 Months)



*Refers to September 2012 compared to September 2011

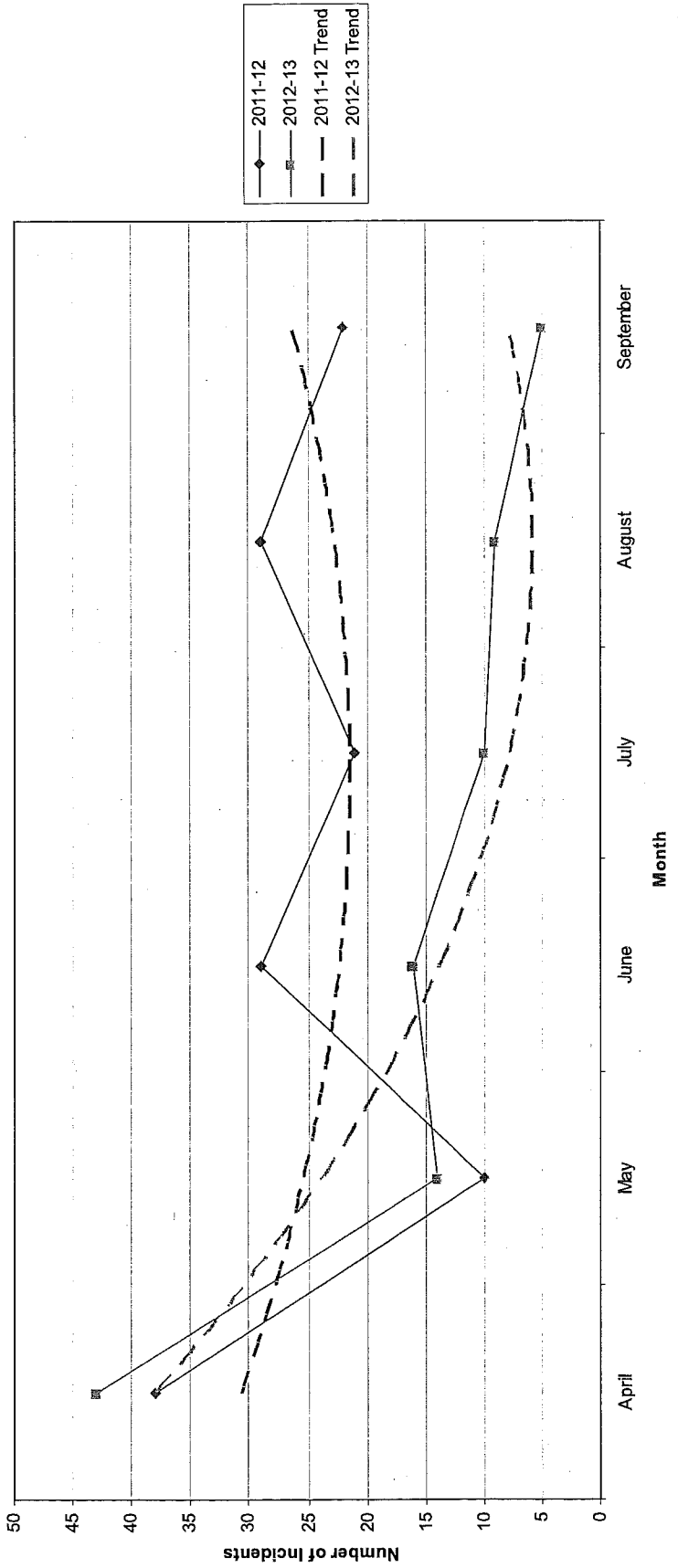
- For the month of September 2012 compared to September 2011, St Anns is showing a reduction of All ASB calls.
- By Year to Date, St Anns has experienced a further reduction in All ASB calls of -21%. The Year to Date performance of the Division as a whole was at -31% at the end of September 2012.
- Over a 2010/11 Baseline St Anns is showing a reduction of -8%. The graph also highlights the steady decline in ASB calls over the past 6 months.
- Of all ASB calls received for St Anns in September 2012 the majority (73%) were categorised as 'Nuisance'. This is consistent with the Division as a whole. Of the remaining calls 17% were classed as 'Environmental' and 10% were classed as 'Personal'.

Graffiti Reports

AMBER	17 fewer reports	-77%
GREEN		

- All data refers to a comparison with the previous year's month
- It is proposed that performance over time graphs be used for each indicator
- Historic data for comparison is not available for dog fouling

Incidents of Graffiti

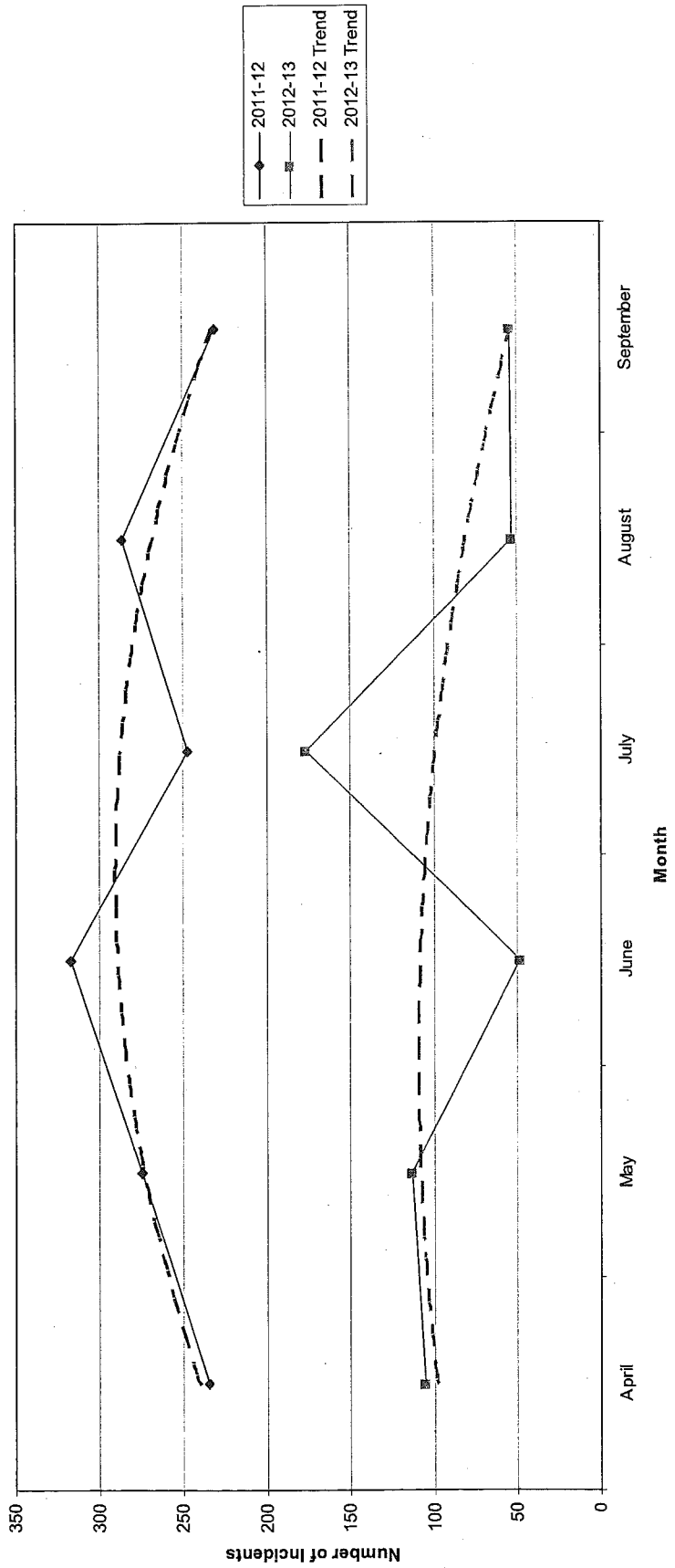


Fly Tipping

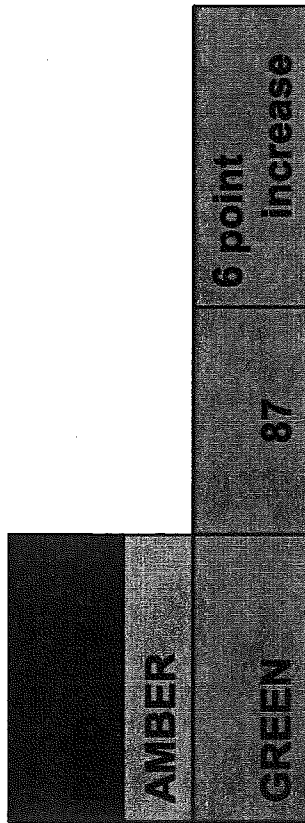
AMBER	177 fewer reports	-77%
GREEN		

- All data refers to a comparison with the previous year's month
- It is proposed that performance over time graphs be used for each indicator
- Historic data for comparison is not available for dog fouling

Incidents of Fly Tipping

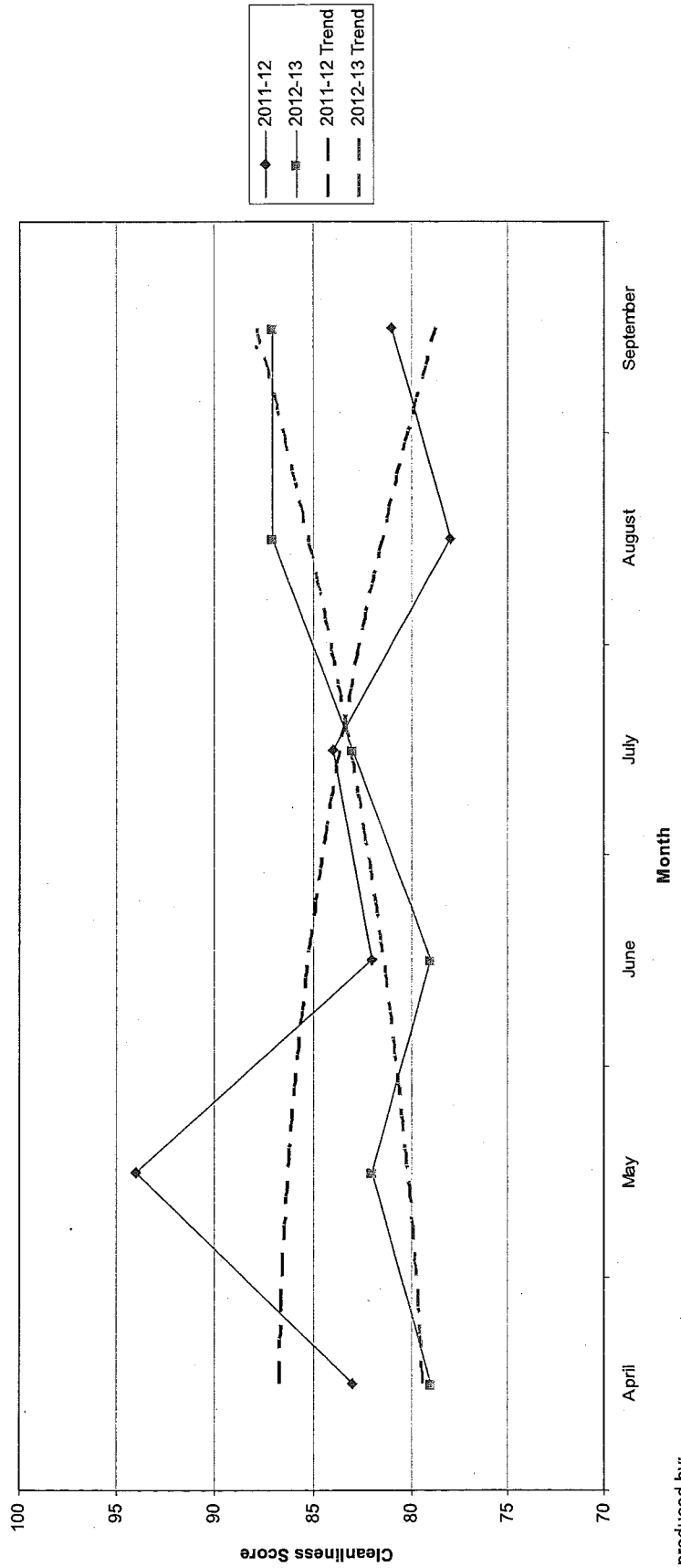


Cleanliness Index



- All data refers to a comparison with the previous year's month
- It is proposed that performance over time graphs be used for each indicator
- Historic data for comparison is not available for dog fouling

Cleanliness Index



Unemployment Rate

Ward	Aug-12			Change in last month		Change in last year	
	Number	Rate	City Rank	Number	%	Number	%
Arboretum	830	7	9	12	1.5	86	11.6
Aspley	1,197	10.6	1	15	1.3	57	5
Basford	730	6.6	11	21	3	25	3.5
Berridge	1,090	7.5	6	17	1.6	115	11.8
Bestwood	989	8.7	4	-26	-2.6	-19	-1.9
Bilborough	762	7.3	7	-36	-4.5	6	0.8
Bridge	756	7.2	8	6	0.8	15	2
Bulwell	1,045	9.6	2	-4	-0.4	32	3.2
Bulwell Forest	444	4.9	15	-12	-2.6	-5	-1.1
Clifton North	381	4.3	16	-14	-3.5	27	7.6
Clifton South	506	5.8	12	12	2.4	-11	-2.1
Dales	883	7.6	5	-10	-1.1	8	0.9
Dunkirk and Lenton	262	2.4	19	-5	-1.9	-27	-9.3
Leen Valley	351	5	14	13	3.8	26	8
Mapperley	750	6.7	10	31	4.3	8	1.1
Radford and Park	776	4.1	17	-19	-2.4	36	4.9
Sherwood	552	5.1	13	-19	-3.3	-71	-11.4
St Ann's	1,242	9	3	13	1.1	29	2.4
Wollaton East and Lenton Abbey	144	1.5	20	9	6.7	4	2.9
Wollaton West	262	2.8	18	29	12.4	25	10.5

Source: ONS claimant count August 2012 (from Nomis)

Housing



St Anns Ward

Empty properties - St Anns Ward

Indicator	Current Target	2010/11		2011/12		2012/13		Trend
		Value	Status	Value	Status	Value	Status	
Average void re-let time for St Anns Ward	26	31.93		23.73		35.9		↔
Lettable voids St Anns Ward		24		25		30		↔
Empty properties awaiting decommission in St Anns Ward		43		6		11		↔

Estate star ratings (from Tenant Service Inspectors)

Indicator	2010/11		2011/12		2012/13		Trend
	Value	Status	Value	Status	Value	Status	
Estate star rating - St Anns	2 Star	●	3 Star	●	3 Star	●	↗
Estate star rating - Marmion Road	3 Star	●	2 Star	●	3 Star	●	↔

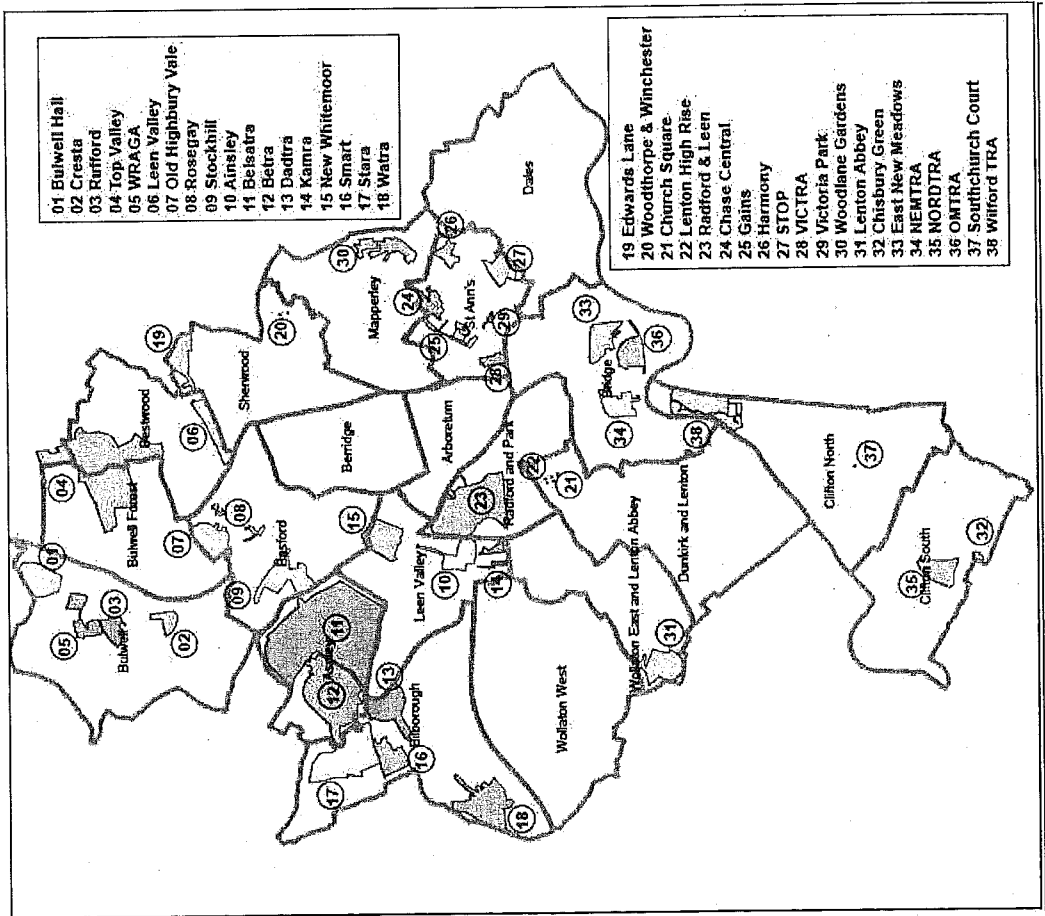
Rent Collection - St Anns

Indicator	Current Target	2010/11		2011/12		2012/13		Trend
		Value	Status	Value	Status	Value	Status	
Rent charged that has been collected - St Anns office area	100%	100.3%		101.4%		99.9%		↘

Data prepared by Nottingham City Homes Performance Team
 For more information please contact Tricia Quinn, Performance Review Manager on 0115 9157365 or Marcus Parton, Performance Review Officer 0115 915715

Housing

Map of Tennant and Resident Associations by Ward



Community Protection

In St Anns in the last month there were the following court outcomes

- Two injunctions: one was for noise and the other was for ASB;
- An outright possession order (eviction) for drugs; and
- A proved breach of injunction/ undertaking for noise.

Data has been received from Community Protection and where postcodes have been listed these have been geo-coded and mapped to determine the Ward. All addresses relate to the address of the Perpetrator.

FPNs are not currently available at Ward level.

Methodology

Crime Data and ASB calls have been extracted from the Police systems and mapped to ascertain which Ward they occurred in.

Due to the dates of the meetings, data for all Wards was extracted at the same time at the start of the month - and as such is not officially 'validated' data.

Where possible the most recent data is used, although for some areas this may be a month further in arrears.

Discussions continue with other agencies regarding what further data can be included.

AREA COMMITTEE EAST (ACE) (Dales, Mapperley, St Ann's) – 20th November 2012

Title of paper:		AREA CAPITAL FUND - 2011/13 Programme	
Director(s)/ Corporate Director(s):		Andy Vaughan Director of Neighbourhood Services	Wards affected: Dales, Mapperley & St Ann's
Contact Officer(s) and contact details:		Dorothy Holmes Locality Manager 0115 9150378 dorothy.holmes@nottinghamcity.gov.uk Zbyszek Luczynski Neighbourhood Development Officer – Dales Ward 0115 9155694 zbyszek.luczynski@nottinghamcity.gov.uk Beth Hanna Neighbourhood Development Officer – Dales Ward 0115 9150395 beth.hanna@nottinghamcity.gov.uk Fi Cusick Neighbourhood Development Officer – Mapperley Ward 0115 8839728 fi.cusick@nottinghamcity.gov.uk Michelle Graley Neighbourhood Development Officer – St Ann's Ward 0115 9150197 michelle.graley@nottinghamcity.gov.uk	
Other officers who have provided input:		Prairie Bryant, Projects Officer, Highway Services Tel: 0115 915 2061 prairie.bryant@nottinghamcity.gov.uk Will Morritt Area Manager Nottingham City Homes 01159156919 william.morritt@nottinghamcityhomes.org.uk	
Relevant Council Plan theme(s):			
World Class Nottingham			
Work in Nottingham			
Safer Nottingham		x	
Neighbourhood Nottingham		x	
Family Nottingham			
Healthy Nottingham			
Leading Nottingham		x	
Summary of issues (including benefits to customers/service users):			
This report provides Councillors with :- <ul style="list-style-type: none"> • Latest spend proposals under the Area Capital Fund including highways and footways 			
Recommendation(s):			
1	a) Note the monies available to Dales, Mapperley and St Ann's Wards as outlined in Appendix 1 b) That the Area Capital programme of schemes for Dales, Mapperley and St Ann's, as		

1 BACKGROUND

- 1.1 The Area Capital Programme was established to improve the environment of the neighbourhoods and to create a sense of place for residents in order to improve the quality of life of local people. Since it was established in 2006 to meet the then corporate priority of "Transforming Neighbourhoods" the Area Capital Fund has included a total programme expenditure portfolio of £40 million. The improvements that have been carried out to date using this programmed have included footpath, fences, visual enhancements to public realm, refurbishment of parks and improvements to public buildings.
- 1.2 Resources are allocated from the Nottingham City Council general fund, the Local Transport Plan (LTP) and from the Housing revenue Account. To achieve a joint approach to environmental improvements in neighbourhoods, a greater degree of flexibility has been established to prioritise and deliver improvements so that there is a synergy in local solutions for local issues across neighbourhoods.
- 1.3 The programme of works is a rolling programme. There have been instances where schemes are started, with strong community involvement and interest, only to be altered at a later stage due to changing circumstances such as economic conditions and changes in land values.
- 1.4 The Area Committee, particularly community representatives, are invited to comment specifically on those schemes identified in the proposals column and also to consider whether certain schemes can be linked to other programmes of work in order to generate best value and create a greater impact on the local area.

2 REASONS FOR RECOMMENDATIONS (INCLUDING OUTCOMES OF CONSULTATION)

- 2.1 The Nottingham LTP 2011-2026 maintains a commitment to deliver local transport improvements across Nottingham's Neighbourhoods and prioritises small scale transport improvements of importance to local communities

As part of the budget process Nottingham City Council approved in March 2011 an LTP capital allocation of £2.5 million citywide between 2011-2013.

To give opportunity for the Area Committee to make comment on suggested schemes and their progress

3 OTHER OPTIONS CONSIDERED IN MAKING RECOMMENDATIONS

- 3.1 None

4 FINANCIAL IMPLICATIONS (INCLUDING VALUE FOR MONEY)

- 4.1 Bringing together the various strands which form part of the Area Capital Programme enables the City Council to respond efficiently in delivering on public realm improvements as identified by local people.

5 RISK MANAGEMENT ISSUES (INCLUDING LEGAL IMPLICATIONS, CRIME AND DISORDER ACT IMPLICATIONS AND EQUALITY AND DIVERSITY IMPLICATIONS)

- 5.1 A risk register has been produced which is regularly monitored.

6 EQUALITY IMPACT ASSESSMENT

- Has the equality impact been assessed?
Not needed (report does not contain proposals or financial decisions)
No
Yes – Equality Impact Assessment attached

7 LIST OF BACKGROUND PAPERS OTHER THAN PUBLISHED WORKS OR THOSE DISCLOSING CONFIDENTIAL OR EXEMPT INFORMATION

7.1 Highways Framework Agreement.

8 PUBLISHED DOCUMENTS REFERRED TO IN COMPILING THIS REPORT

8.1 Executive board report Area Capital Resource Allocations for 2011-2013. November 2012 Budget.

APPENDIX 1

Dales Area Capital 2011 - 2013 LTP schemes

Location	Type	Councillor Prioritised / Area Committee Approved	Estimate	Estimated start date	Completed	Details
Dale Grove	Tree works	Approved September 2012	£2,270	TBC	No	Removal and replacement of 4 Highways trees.
Linton Rise	Footpath	Approved September 2012	£21,000		Ongoing	Large scale patching on Linton Rise
Various	Dropped Crossings	Approved September 2012	£4,000		Ongoing	Additional funding to previous programme to help fund crossings in priority areas.
Parkdale Road area	TRO	Approved September 2012	£5,000	TBC	No	
Sninton Dale	Footpath	Approved March 2012	£8,750	-	Yes	Large scale reconstruction patches on footpath
Parkdale Road	VAS	Approved March 2012	£6,400	TBC	No	VAS to be installed; location to be determined
Candle Meadow	TRO	Approved March 2012	£5,000	TBC	No	Double yellow lining to be installed on the estate
Sninton Hermitage	TRO	Approved March 2012	£5,000	TBC	No	Double yellow lining to be installed.
Whites Avenue	Footpath	Approved November 2011	£33,100	-	Yes	Footpath reconstruction
Watson Avenue	TRO	Approved November 2011	£5,000	TBC	No	Double yellow lining to be installed
Sedgley Avenue	Signing	Approved November 2011	£400	-	Yes	Street Name Plates with No Through Street
Colwick Park	Gating / Fencing	Approved September 2011	£4,000	-	Yes	Gate and fence at Candle Meadow flood bank
Lichfield Road	Lining	Approved September 2011	£1,000	-	Yes	Received Portfolio Holder approval for advisory disability bay markings.

Total LTP schemes*

£100,920

Dales Area Capital Public Realm schemes (from carry over & decommitted schemes)

Location	Type	Councillor Prioritised / Area Committee Approved	Estimate	Estimated start date	Completed	Details
Sninton Allotments	Security	Approved September 2012	£1,500	TBC	No	Security improvements and fencing replacement
Greenside Walk	Tree works	Approved March 2012	£1,028	--	Ongoing	Tree works on Greenside Walk
Colwick Woods Park	Contribution	Approved March 2012	£5,000	TBC	No	Matched funding for WREN bid.

Total Public Realm schemes

£7,528

Dales Area Capital De-commitments

Location	Type	Reason	Amount	Details
Whites Avenue	Footpath	Underspend	£6,383	Underspend on footpath reconstruction (LTP)
Lichfield Road	Lining	Underspend	£500	Disability bay was installed for £500 as previously discussed with councillors (LTP)
Colwick Woods	Gating / Fencing	Underspend	£800	Horse gate and knee rail fencing at Greenwood Road entrance (Public Realm)

Sneinton Boulevard	Carriageway	Underspend	£10,169	Carriageway Resurfacing (Public Realm)
--------------------	-------------	------------	---------	--

Total Decommited*** £17,852

Total 2011-2013 LTP allocation
 Balance carried over from 2010-2011
Total Available 2011 - 2013 ACF
 *Less LTP schemes
 **Less Public Realm schemes
 ***Decommitted funds
Remaining available balance
 LTP element remaining
 Public Realm element remaining

£121,291
 -£1,509
£119,782
 - £100,920
 - £7,528
 + £17,852
£29,186
 £27,254
 £1,932

Mapperley Area Capital 2011 - 2013 LTP schemes

Location	Type	Councillor Prioritised / Area Committee Approved	Estimate	Estimated start date	Completed	Details
Mapperley Ward	Road safety / Traffic Management	Approved September 2012	£45,956			Road safety and Traffic Management schemes - exact details to be determined and reported to Area Committee.
Grosvenor Avenue	Footpath	Approved September 2011	£21,000			Footpath reconstruction and kerb replacement
Tavistock Drive	Footpath	Approved September 2011	£23,000			Targeted patching scheme to be carried out on the footpaths.
Ashover Close	Barrier	Approved January 2012	£515	--	Yes	Remove cycle barrier and install new at more suitable location
Walter Halls School	Bollards	Approved September 2011	£1,000	TBC		Install new Billy Bollard outside school
Waller Halls School	TRO	Approved September 2011	£6,000	TBC		Additional zig zag lines outside school
St Bartholomew's Road / Gordon Road Junction	Lining	Approved September 2011	£5,000	--	Yes	Junction protection and directional lining
Cudworth Close area	Lining	Approved September 2011	£5,000	--	Yes	Junction protection

Total LTP schemes*

£107,471

Mapperley Area Capital Public Realm schemes (from carry over & decommitted schemes)

Location	Type	Councillor Prioritised / Area Committee Approved	Estimate	Estimated start date	Completed	Details
Elohim Community Centre	Dropped crossing	Prioritised 1st October 2012	£975			Repair crossing outside centre to DDA standards
Hogarth School	Access improvements	Prioritised 1st October 2012	£5,300			Contribution towards constructing a path to provide disability access to pavilion
St Andrew's Church	Gating	Approved September 2012	£1,030	--	Yes	Joint funded with Police Taskforce to install gates to churchyard to prevent ASB.
Wells Road	CCTV	Approved January 2012	£15,710	--	Yes	Installation of CCTV of the Wells Road
Galena Garages	Gating	Approved January 2012	£2,500	--	Yes	Combined scheme with County Council to provide a gate to address ASB issues at the Galena Garages.

Total Public Realm schemes**

£25,515

Mapperley Area Capital Decommittments

Location	Type	Reason	Amount	Details
Corporation Oaks	Fencing	Not progressed	£23,000	Underspend on Scheme (Public Realm)
Woodborough Road shops	TRO	Not required	£500	Funding found elsewhere (Public Realm)
Coppice Park	Access	Underspend	£4,373	Underspend on scheme (Public Realm)
Elm Avenue	Footpath	Not progressed	£7,000	Create footpath between schools. Scheme not progressed (Public Realm)
Mapperley Road CCTV	CCTV	Underspend	£13,632	Underspend on scheme (Public Realm)
Land opp 112 Burgess Road	Fencing	Not progressed	£6,000	Land being transferred to Severn Trent and they will address issues (Public Realm)

Pearmain Estate Cut-through	Path clearing	Not required	£3,000	Funding not required - work carried out with funding from other source (Public Realm)
Total Decommitted***				
£57,505				
Total 2011-2013 LTP allocation				
Balance carried over from 2010-2011				
£0				
Total Available 2011 - 2013 ACF				
£107,471				
*Less LTP schemes committed				
- £107,471				
**Less Public Realm schemes committed				
- £25,515				
+ £57,505				
Remaining available balance				
£31,990				
LTP element remaining				
£0				
Public Realm element remaining				
£31,990				

St Anns Area Capital 2011 - 2013 LTP schemes

Location	Type	Councillor Prioritised / Area Committee Approved	Estimate	Estimated start date	Completed	Details
Lotus Close	Footpath	Approved March 2012	£16,576	-	Yes	Footpath reconstruction of adopted highway
St Anns Traffic Management	TRO	Approved March 2012	£9,763	Winter 2012 / 2013	No	Residents Parking on Pym Street and Chedworth Close and waiting restrictions on Windmill Lane.
Peas Hill Road / Ashford Street	Parking	Approved November 2011	£5,000	Autumn 2012	No	
Lorne Walk	Stopping up order	Approved November 2011	£2,000	-	Yes	

Total LTP schemes*

£33,339

St Anns Area Capital Public Realm schemes (from carry over or decommitted 2009 - 2011 schemes)

Location	Type	Councillor Prioritised / Area Committee Approved	Estimate	Estimated start date	Completed	Details
St Anns Christmas lights	Christmas lights	Approved by DA	£4,532			
Children's Centre	Access Improvements	Approved November 2011	£9,000	--	Yes	Contribution to Improve access
Necta Building	Community Project	Approved November 2011	£5,000	--	No	
10 Denstone Road	Gate	Approved September 2011	£525	01/14/2012	Yes	Install security gate at alley to match existing on road

Total Public Realm schemes**

£19,057

St Anns Area Capital Decommittments

Location	Type	Reason	Amount	Details
Lotus Close	Footpath	Underspend	£7,854	Underspend on footpath resurfacing. (LTP)
Russell Youth Club	Contribution	Not progressed	£350	Scheme not progressed (Public Realm)
Stonebridge Farm	Parking Bays	Not progressed	£30,000	Scheme not progressed (Public Realm)

Total Decommittment***

£38,204

Total 2011-2013 LTP allocation

£155,841

Balance carried over from 2010-2011

£4,150

Total Available 2011 - 2013 ACF

£159,991

*Less LTP schemes

- £33,339

**Less Public Realm schemes

- £19,057

***Decommittment funds

+ £38,204

Remaining available balance

£145,799

LTP element remaining

£130,356

Public Realm element remaining

£15,443

APPENDIX 2

<u>Ward</u>	<u>Scheme Name</u>	<u>Scheme Details</u>	<u>Scheme issues</u>	<u>Priority</u>	<u>Approved at Area Committee</u> Y/N	<u>Quote</u>
Mapperley	63 Pearmain Dr	To provide metal gate 1.8metres high at entrance to rear alley to properties behind 63 Pearmain Drive, St Ann's to prevent anti-social behaviour and unauthorised access to rear gardens to steal belongs from back gardens.	Reported local gang are also congregating in the alleyway and tenants are fearful of reprisals from gang members if the police are called. Alleyway serving seven properties (x8 keys required).	Medium		£661.82
Mapperley	15 Byford Cl	To provide metal fencing and gate to frontage of 15, Byford Close, Mapperley, Nottingham. Gate and fence removed to install hard-standing for a motobility vehicle for a disabled female tenant of house. Fencing and gate was not specified to be replaced	Currently hard-standing is being used by unauthorised vehicles parking on driveway and used as a turn area in this cul de sac by other vehicles. Fears motobility car will be accidentally damaged by unauthorised vehicle u turn activities. Agreed 3.5-4m con	H		£1,450.49
Mapperley	Wells Grds	To provide metal fencing to frontage of Wells Gardens to Street Frontage with The Wells Road Two blocks and end of Block 1. To provide metal gate in blocks 1, 2, and 3 with opening width of 70" to enable access for gang mower. Supply and fit decorative fencing.	Prevent ASB and increase security to site	H		£13,679.46
Mapperley	Mapperley Trees	A professional survey of the trees in gardens and on NCH communal land and common areas	An environmental proposal is to survey these trees to get them on tree services amenity tree list so they get proper care and horticultural maintenance. Some of these trees are far too large for tenants to maintain themselves and too expensive.	H		
				Mapperley	Total	£15,792
				Mapperley	Allocation	£22,214
					Unspent	£6,422
Dales	Colwick Woods Ct A	The paving slabs around the block are removed and the ground is tarmaced	Improve visual image of block of flats	H		£19,329.93
Dales	2-16 Newark Crescent	Replace wooden fencing with hoop hop fencing and gate with slam lock, next to block 2-16 Newark Crescent.	Improve security and visual impact of area	H		£2,640.98
Dales	13-23 Taylor Cl	Remove old metal fencing and replace with 8-10' herras fencing along the boundary opposite 13 to 23 Taylor Close.	Improve security and visual impact of area	Medium		£1,873.74
Dales	Bentink &	Install parking barriers to main gates at Bentink Crf and	Two gates required to prevent non	H		£25,017

	Manvers Crt - Barriers	Manvers Ct	residents parking in small block car parks as very near city centre		
Dales	Cosby Rd	Install gates next to 2 Cosby road and between 32 & 34 Cosby road	Improve security to area	H	£589.56
				Dales	£49,451
				Dales	£58,748
					Under spend
					£9,272.00
St Anns	Sycamore TRA plus	We propose a clearance of one bank at 4 Blocks St Anns, NG3 4PY and supply architectural plans for future work to banks for the remainder of the 'Flowers Estate'.		High	£18,941.14
St Anns	Abbotsford dr, (next to 152 Abbotsford Drive)	x5 Concrete bollards to be installed by the path adjacent 150 Abbotsford Drive	prevent tenants and residents parking on communal green area.	Medium	£1,356.52
St Anns	Comyn Grds	4 course low wall with fence on top to be constructed on the right side of the garden of 27 Comyn Gardens.	required to stop joyriders cutting across garden and on the pathway of Alison Walk.	Medium	£5,106.26
St Anns	Truman Close	To replace double metal gate to a single gate.	So that cars do not park in the communal area of Truman Close	Medium	£122.40
St Anns	Duncombe Close	Following consultation with residents and Neighbourhood Services it has been agreed that the front elevation to block 2-48 Duncombe Close flats and an end elevation require gated access in the middle of the communal gardens. This will enable residents I	Improve appearance of area, rat infestation and flytipping into the existing dense shrubs	Medium	£1,941.14
St Anns	7- 10 Lotus Close (No 10 Owner Occupier)	It has been proposed to extend the rear gardens for 7-10 Lotus Close -to take up the communal square, provide six foot wooden fencing and gates to the affected 4 properties.	Communal concreted square rear of 7-10 Lotus Close and 21-33 Westminster Close, is a hot spot for drug related activities especially at night when there is minimal natural surveillance. The square is also frequently fly-tipped. Extend 7-10 (x4) properties	Medium	£16,900.96
St Anns	Dane Court	Supply and fit double gates to existing fencing	To allow access for motorised grass cutting	Medium	£1,836.66
St Anns	Kelham Green - Trees	To crown lift, section fell and tree fell.	Density of trees at front of properties and lack of light form says £1,780.00?	High	£1,780.00
St Anns	2 Bilberry Wlk	Close off the front area at the rear of the parking bay to 2 Bilberry Walk. Incorporate the obsolete rear alleyway and	2 Bilberry Walk St Anns Nottingham NG3 . This closed off alleyway is	High	£5,145.80

		steps into the garden of 2 Bilberry Walk. Completely enclose the rear area by extending the rear boundary wall and fence to the top to a	being used by young people to congregate, take drugs, and as an escape route to evade Police detection. This behaviour is causing the residents of 2 and 4 Bilberry Walk to be intimidated			
St Anns	7-9 Walton Ave	Remove hedge that divides alleyway between 7 – 9 Walton Avenue and 110 – 112 Windmill Lane Replace hedge with approximately 26 metres of metal fencing.	To prevent it being used as a cut-through due to ASB and litter.	Medium		£1,470.84
St Anns	144 Windmill Lane	Installation of 13m of 6ft wooden close-board fence. Agreed on site for timber fencing to rear and rear side and side plus metal gate in alleyway.	Tenant has complained about ASB from drug use in the alleyway and she doesn't feel she can maintain the hedge safely. Cllr and MP enquiry so agreed to refer as environmental	Medium		£2,680.68
St Anns	Keswick Ct	fit additional locking gate and barrier to adjacent fence at entrance to drying area at the top of the stairs.	Problems with youths entering the communal area and drinking/loitering on the stairwell. Accessing corridors and stairwells by climbing over wall or railings	Medium		£999.60
				St Anns	Total	£58,282
				St Anns	Allocation	£164,474
					Unspent	£106,192

6

AREA COMMITTEE EAST – 20th NOVEMBER 2012

Title of paper:	Delegated Authority Projects	
Director(s)/ Corporate Director(s):	Andy Vaughan Director of Neighbourhood Services	Wards affected: St Ann's Dales Mapperley
Contact Officer(s) and contact details:	Dorothy Holmes, Locality Manager 0115 9159378 Dorothy.holmes@nottinghamcity.gov.uk	
Other officers who have provided input:	Michelle Graley, Neighbourhood Development Officer, St Ann's 0115 9150197 michelle.graley@nottinghamcity.gov.uk Zbyszek Luczynski, Neighbourhood Development Officer, Dales 0115 9155694 zbyszek.luczynski@nottinghamcity.gov.uk ; Beth. Hanna, Neighbourhood Development Officer, Dales 0115 9155694 beth.hanna@nottinghamcity.gov.uk Fi Cusick Neighbourhood Development Officer Mapperley 0115 8839728 fi.Cusick@nottinghamcity.gov.uk Anita Winter Senior Accounts Technician anita.Winter@nottinghamcity.gov.uk	

Relevant Council Plan Strategic Priority:	
World Class Nottingham	
Work in Nottingham	
Safer Nottingham	x
Neighbourhood Nottingham	x
Family Nottingham	x
Healthy Nottingham	x
Leading Nottingham	x

Summary of issues (including benefits to customers/service users):	
This report advises the Area Committee of the use of delegated authority by the Director of Neighbourhood Services.	
Recommendation(s):	
1	That the Area Committee note the actions agreed by the Director of Neighbourhood Services in respect of projects and schemes within Area 6, detailed in Appendix A.

D:\WebApps\CommitteeUpload\20121120_DELEGATED_AUTHORITY_REPOR
T_FINAL.doc

1 BACKGROUND

- 1.1 This action follows the arrangements established by the Executive Board to allow for spending approvals through individual Members budget allocations.

2 REASONS FOR RECOMMENDATIONS (INCLUDING OUTCOMES OF CONSULTATION)

- 2.1 Records detailing Members spending decisions and consultation are shown in the attached Appendix. In accordance with the Constitution the Area Committee is required to note spending decisions taken by Ward Members.

3 OTHER OPTIONS CONSIDERED IN MAKING RECOMMENDATIONS

- 3.1 Covered within the Appendix.

4 FINANCIAL IMPLICATIONS (INCLUDING VALUE FOR MONEY)

- 4.1 Members had an individual allocation for 2012/13 of £5,000. Arrangements agreed by Executive Board for spending the money were reported to the Area Committee at its meeting May 2012.

St Ann's Ward was also granted a sum of £16,323 under the heading -- Indices of Multiple Deprivation (IMD) funding.

- 4.2 The full balance for 2012/13 has not been allocated. Further projects will be reported to a subsequent committee.

5 RISK MANAGEMENT ISSUES (INCLUDING LEGAL IMPLICATIONS, CRIME AND DISORDER ACT IMPLICATIONS AND EQUALITY AND DIVERSITY IMPLICATIONS)

- 5.1 These arrangements provide transparency and regulation to the spending of individual Member's allocation.
- 5.2 The funds allocated by Area Committee are used to address diverse needs from various sections of the community and reduce inequalities.

6 LIST OF BACKGROUND PAPERS OTHER THAN PUBLISHED WORKS OR THOSE DISCLOSING CONFIDENTIAL OR EXEMPT INFORMATION

- 6.1 Delegated authority for each scheme listed in Appendix A is held by the Committee Section.

7 PUBLISHED DOCUMENTS REFERRED TO IN COMPILING THIS REPORT

- 7.1 Executive Board – 20 May 2008 – Ward Member Budgets

APPENDIX A

Dales Ward Budget Allocations

Schemes: Dales Ward	Councillor(s)	Amount (total)
Eid Lights Oct 19-Nov 2	Cllrs Khan, Mellen and Williams	£1,970
Oakdale Christmas Lights	Cllrs Khan, Mellen and Williams	£1,314
Christmas tree and lights at Sneinton Dale	Cllrs Khan, Mellen and Williams	£2,286
Balance Brought forward 2011/12	£7,213	
Allocation 2012/13	£15,000	
Total available allocation 05/08/12()	£22,213	
Total allocated at 29/10/12	£12,620	
Total unallocated at 29/10/12	£9,593	

Mapperley Ward Budget Allocations

Schemes: Mapperley Ward	Councillor(s)	Amount (total)
Non Allocated Sept-Nov 12	Cllrs Dewinton, Healy and Molife	£0
Balance Brought forward 2011/12	£15,154	
Allocation 2012/13	£15,000	
Total available allocation 2012/13	£30,154	
Total allocated at 029/10/12	£12,184	
Total unallocated at 29/10/12	£17,970	

St Anns Ward Budget Allocations

Schemes: St Ann's Ward	Councillor(s)	Amount (total)
Halloween Party Bluebell Hill Community Association	Cllrs Collins, Liversidge and Johnson	£500
	Balance Brought forward 11/12	£17,585
	Allocation 12/13	£15,000
	Deprivation(IMD) 12/13	£16,323
	Deprivation(IMD) Drawn back	£801
	Total Funds Available	£49,709
	Total allocated at 29/10/12	£17,803
	Total unallocated at 29/10/12	£31,906

